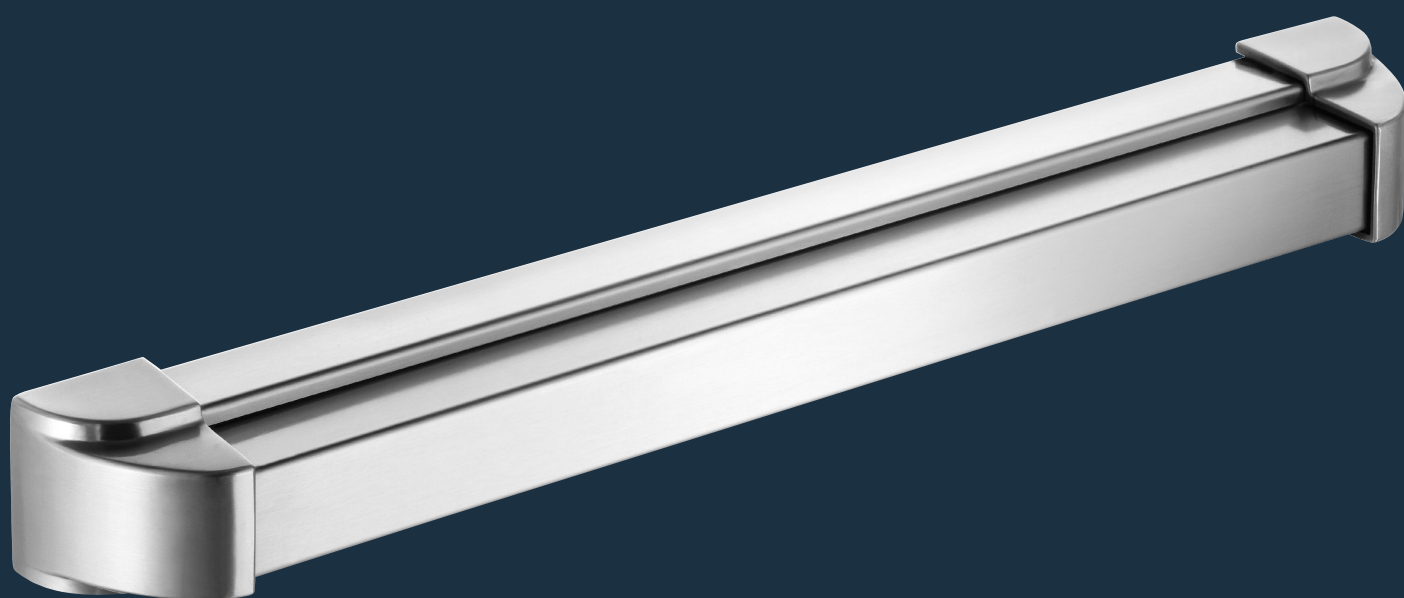


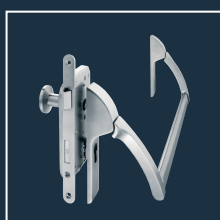
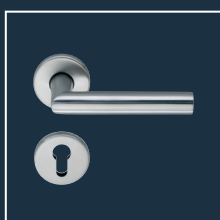
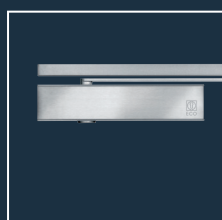



ECO EPN 2000 II

Product information

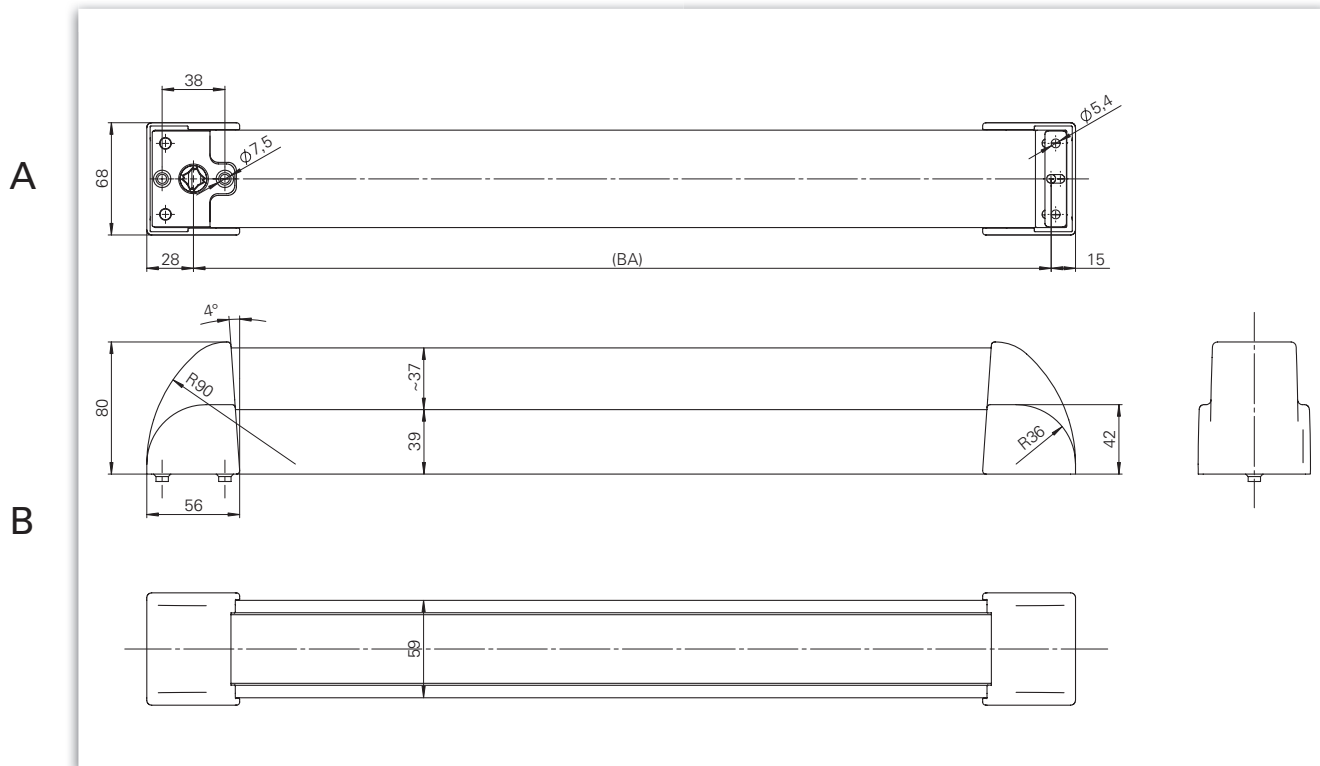


■ SYSTEM TECHNOLOGY FOR THE DOOR



Product characteristics		
Mode of operation	Touchbar Pushbar	■ -
Finishes	Stainless steel	■
	Aluminium F1	■
	Nylon coated	□
Fixing axis	1.000 mm*	■
	1.250 mm*	■
DIN left / DIN right useable		■
For fire- and smoke control doors	F	■
Tested acc. EN / DIN	EN 1125 	■

■ Yes - No □ Further colors on request




EPN 2000 II

Dimensioning: A: Screw-on version / B: Screw through version

Description

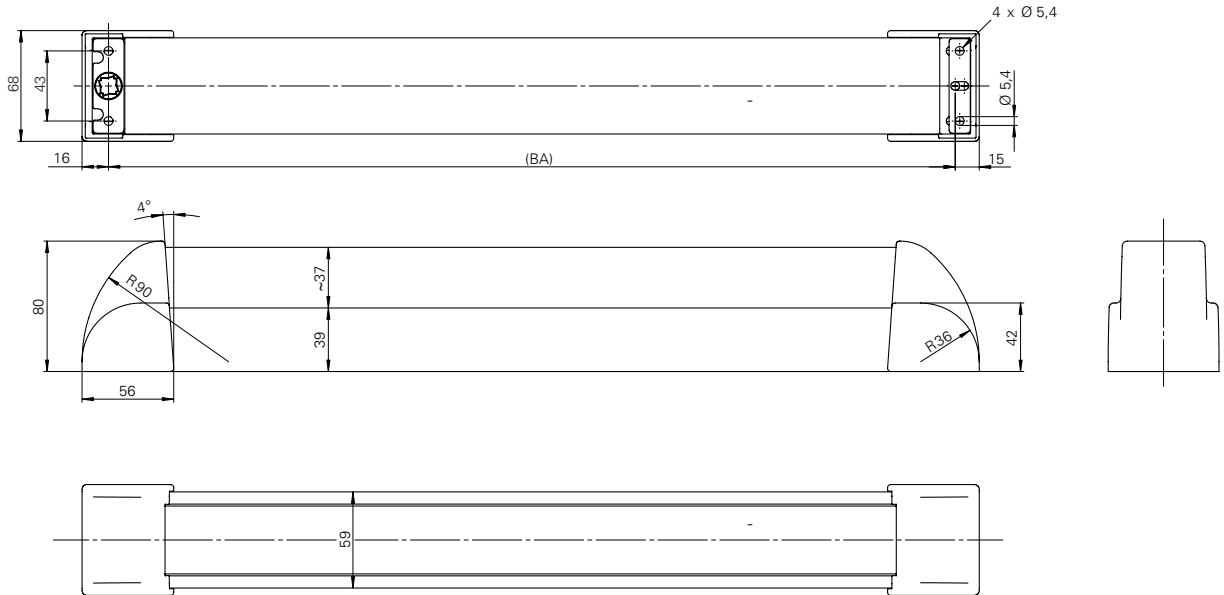
- Tested according to DIN **EN 1125**, **EN 1634**, **DIN 4102 Part 18**
- Can be used according to **EN 1125** only in combination with tested lock and door hardware
- Suitable for the use on fire- and smoke control doors according testing
- Screw-on version
- DIN left / DIN right useable
- Finishes:
Stainless steel
Aluminium F1 coated

 *Manufacturing of special lengths on request and against surcharge possible.

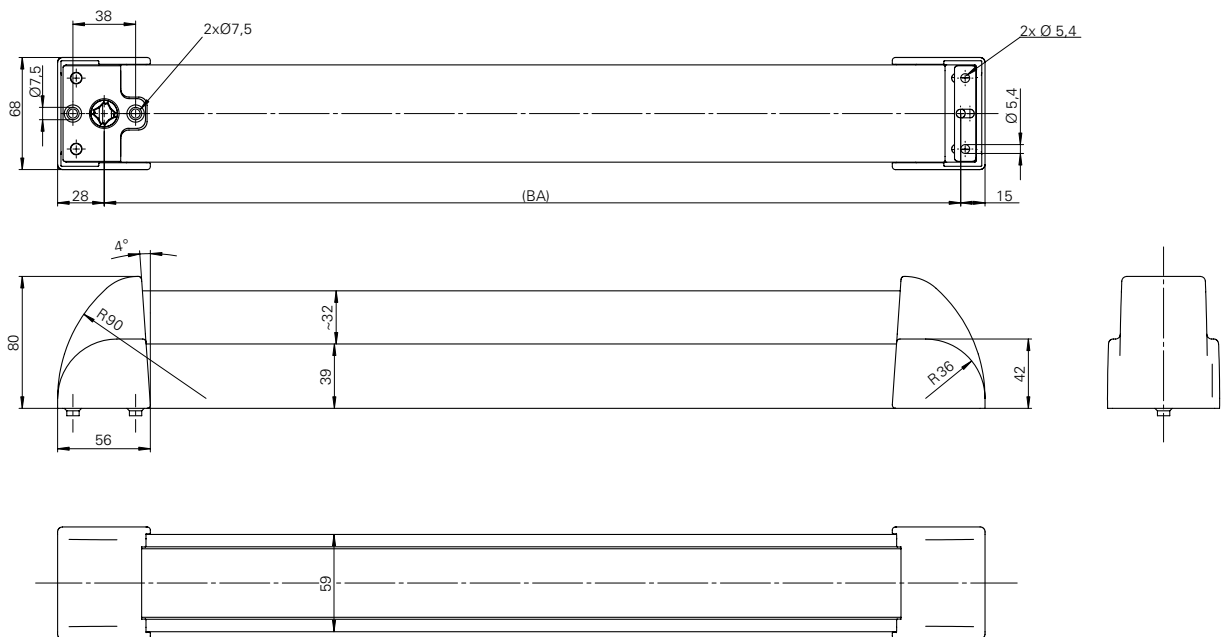
Installation situation

EPN 2000 II

EPN 2000 II for profile frame doors / Screw-on version for active and passive leaf



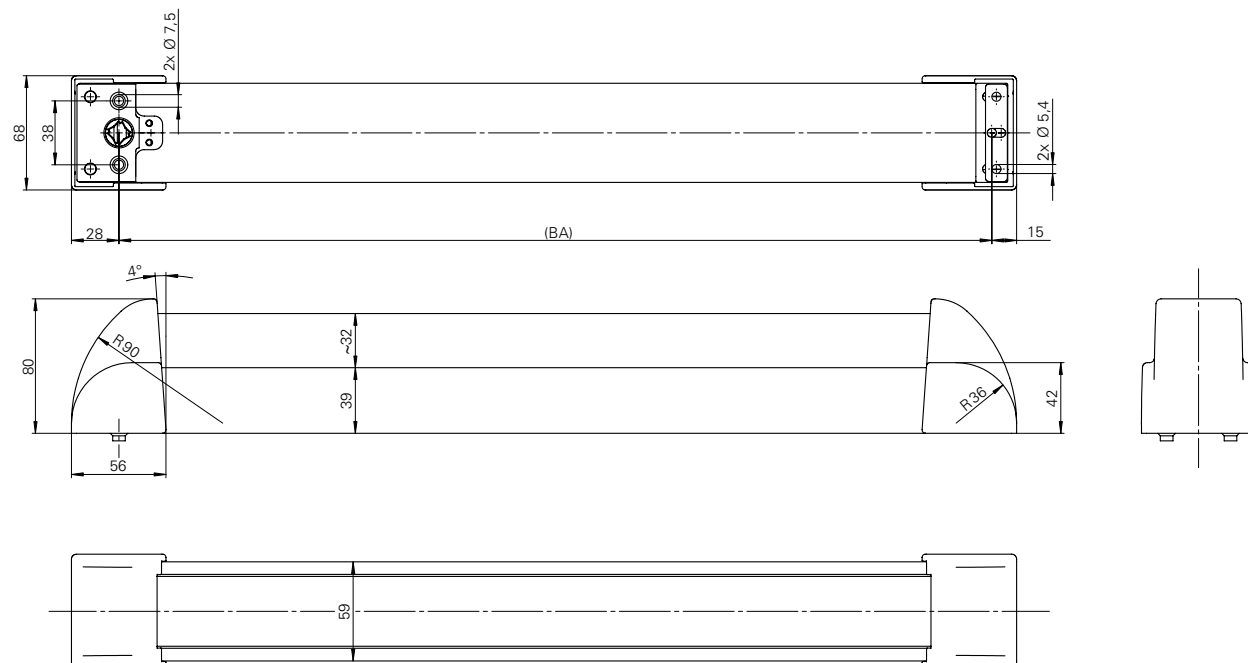
EPN 2000 II for wooden and steel doors / Screw-through version for passive leaf



Installation situation

EPN 2000 II

EPN 2000 for wooden and steel doors / screw-through version for passive leaf





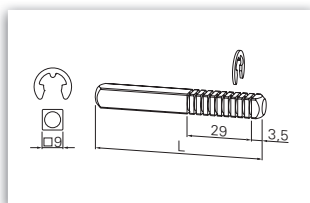
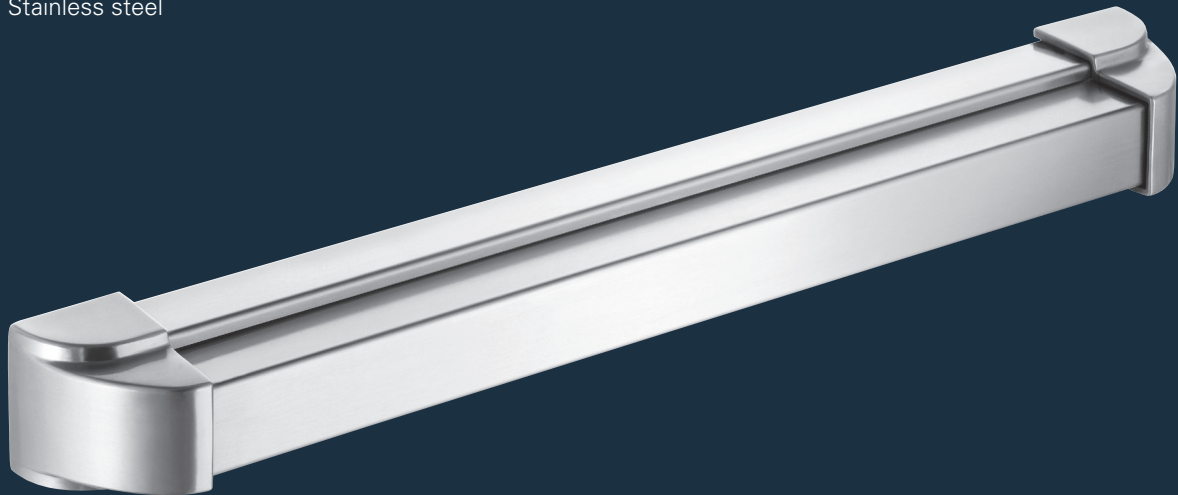
reddot design award
winner 2010

EPN 2000 II Stainless steel	Fixing axis (BA)	Article number
Screw-on version	1.000 mm	106706024600080
	1.250 mm	106706044600080

EPN 2000 II Stainless steel	Fixing axis (BA)	Leaf	Article number
Screw- through version	1.000 mm	Active leaf	106706024600090
		Passive leaf	106707024600090
	1.250 mm	Active leaf	106706044600090
		Passive leaf	106707044600090



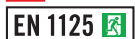
EPN 2000 II
Stainless steel



	Length	Article number
Spindle for passive leaf	55 mm	119007944300030
	75 mm	119007954300030
	95 mm	119007964300030

*Manufacturing of special
lengths on request and against
surcharge possible.





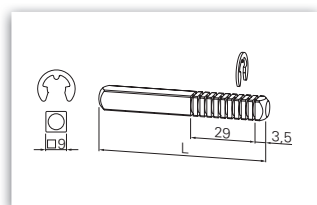
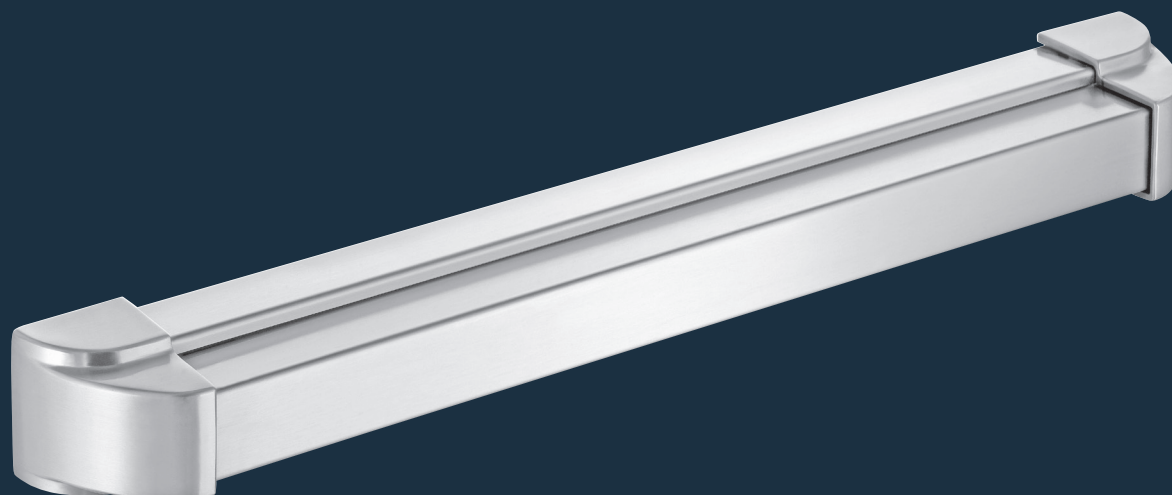
reddot design award
winner 2010

EPN 2000 II F1	Fixing axis (BA)	Article number
Screw-on version	1.000 mm	106706044000080
	1.250 mm	106706043000080

EPN 2000 II F1	Fixing axis (BA)	Leaf	Article number
Screw-through version	1.000 mm	Active leaf	106706023000090
		Passive leaf	106707023000090
	1.250 mm	Active leaf	106706043000090
		Passive leaf	106707024000090



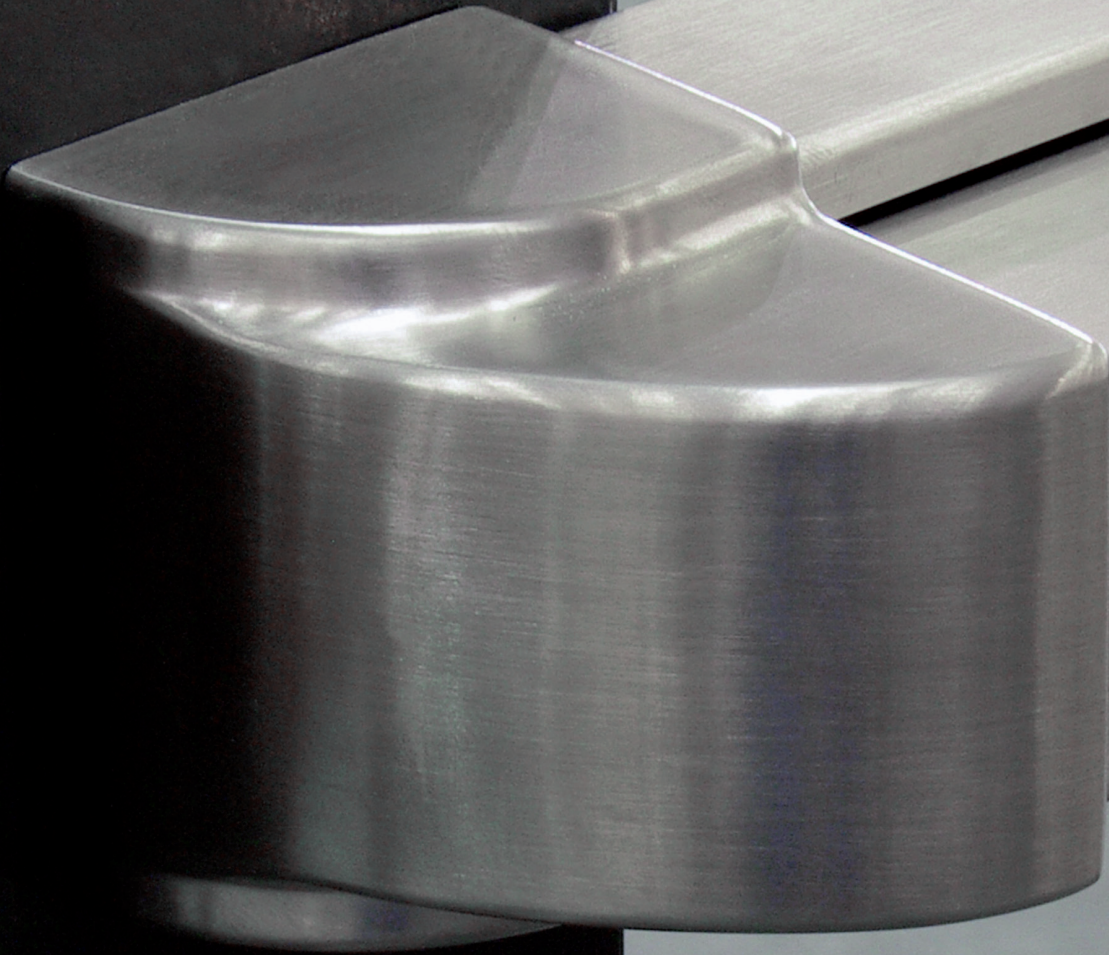
EPN 2000 II
Aluminium F1



	Length	Article number
Spindle for passive leaf	55 mm	119007944300030
	75 mm	119007954300030
	95 mm	119007964300030



SWISSDOOR
DØRTEKNIK FOR PROFESJONELLE



Danish Seller:

Swissdoor ApS

Stenhuggervej 2
DK-5471 Soendersoe
Tlf.: +45 86 28 00 00
mail@swissdoor.dk
www.swissdoor.dk