

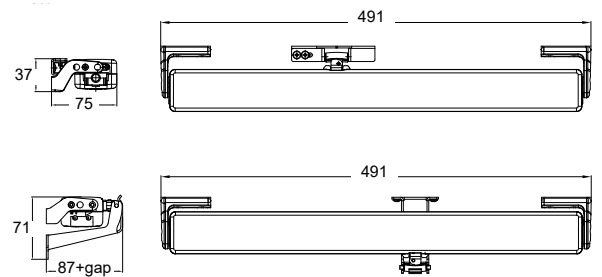
C60

Chain actuator
Thrust force 300N
Max stroke 600 mm



DESCRIPTION FOR TECHNICAL SPECIFICATIONS

Electric C60 actuator with double link articulated chain, enclosed in a special casing, with different mounting accessories for top and bottom hung windows. Operation at 230V 50Hz or, as an alternative, at 24V DC. Maximum applicable load 300N. Adjustment of the stroke at 510 or 600mm by an external knob. Upon request, a preset "S" version for the synchronous operation of more actuators on the same window is available. CE marked device.



High stroke, together with a slim and attractive housing, to allow applications that require minimum size.

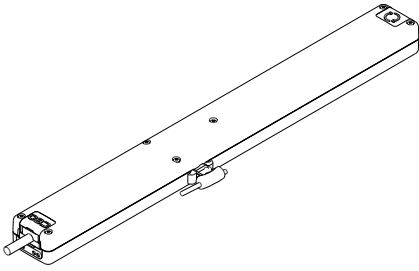
Special hooking of chain to window to guarantee very high resistance with high stroke even on top hung windows.

Simple swivel bracket for fast installation.

TECHNICAL CHARACTERISTICS

	C60 230V	C60 24V
Power supply voltage	230V ~ 50Hz	24V DC
Max applicable load in thrust	300N (max. stroke 510) - 250N (max. stroke 600)	
Max applicable load in traction	200N	
Strokes	510 mm and 600 mm	
Absorbed current	0,14 A	0,49 A
Idle translation speed	8 mm/s	7,5 mm/s
Duration of the idle stroke	75 s	80 s
Double insulated	YES	-
Service Type	S2 of 4 min	
Operating temperature	-5°C +50°C	
Protection Class	IP 30	
Parallel connection option	YES	
Synchronous operation of more actuators on the same window	with S version	
Stroke end	Electronic in opening, by amperometric absorption in closing	
Dimensions	470x48x34 mm	
Weight	1,5 kg	

CODE PRODUCT DESCRIPTION



C60 chain actuator with accessories for application on top hung windows

3E30#000004711	C60 chain actuator 230V - black
3E30#000005016	C60 chain actuator 230V - grey
3E30#000005017	C60 chain actuator 230V - white
3E30#000005018	C60 chain actuator 24V - black
3E30#000005019	C60 chain actuator 24V - grey
3E30#000005020	C60 chain actuator 24V - white

C60 chain actuator with accessories for application on bottom hung windows

3E30#000005021	C60 chain actuator 230V - black
3E30#000005022	C60 chain actuator 230V - grey
3E30#000005023	C60 chain actuator 230V - white
3E30#000005024	C60 chain actuator 24V - black
3E30#000005025	C60 chain actuator 24V - grey
3E30#000005026	C60 chain actuator 24V - white

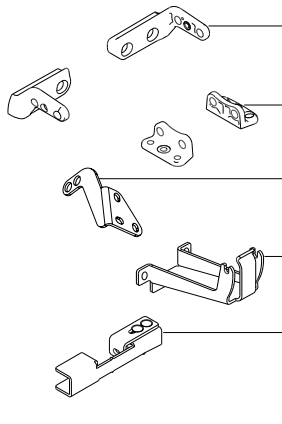
C60 chain actuator with accessories for application on vertical mounting windows

3E30#000005027	C60 chain actuator 230V - black
3E30#000005028	C60 chain actuator 230V - grey
3E30#000005029	C60 chain actuator 230V - white
3E30#000005030	C60 chain actuator 24V - black
3E30#000005031	C60 chain actuator 24V - grey
3E30#000005032	C60 chain actuator 24V - white

Description of the standard pattern for application on top hung windows

3E30#000004711	C60 chain actuator 230V with sash bracket for top hung windows - 1,5mt lead
	Frontal swivel brackets set for top/bottom hung windows
	ARS Rapid hooking device to the frame

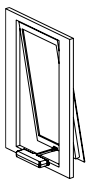
Accessories and spare parts



3A3200	Frontal swivel brackets set for top/bottom hung windows - black
3A3202	Frontal swivel brackets set for top/bottom hung windows - grey
3A3201	Frontal swivel brackets set for top/bottom hung windows - white
3A3210	Swivel brackets set for vertical mounting - black
3A3212	Swivel brackets set for vertical mounting - grey
3A3211	Swivel brackets set for vertical mounting - white
3E3130	Brackets set for installation on the moving part of the window - black
3E3132	Brackets set for installation on the moving part of the window - grey
3E3131	Brackets set for installation on the moving part of the window - white
1E3400	Upper bracket for bottom hung windows - black
1E3402	Upper bracket for bottom hung windows - grey
1E3401	Upper bracket for bottom hung windows - white
1E3301	Hooking device to the frame for application on top hung windows - black
1E3300	Hooking device to the frame for application on vertical mounting windows - black

3A3000 Standard spare parts

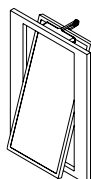
Special stroke < 600 mm available.



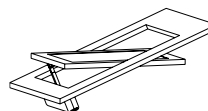
Top-hung windows



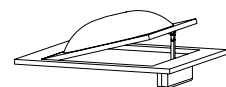
Bottom-hung windows



Bottom-hung windows



Skylights, roof windows



Cupolas