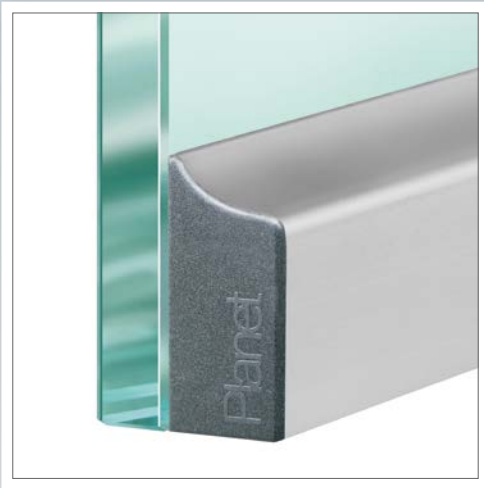
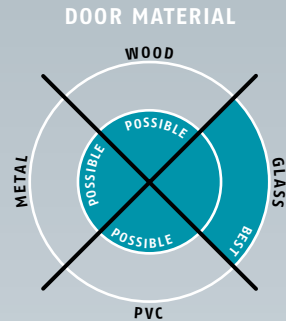


# Planet KG-SM-Set → 16,5 x 35 mm | ↓ 18 mm | ≤ 48 dB



## Main features

- Seal height up to ↓ 18 mm
- Acoustic insulation up to ≤ 48 dB in case of an optimal sealing
- Very easy installation with a set of adhesive tapes
- For new and already existing doors
- Elegant and architectural design solution
- Appropriate for left-hand and right-hand doors
- Unilateral and soundless release, silent seal
- Due to parallel drop-down no trailing on the floor
- Automatic compensation at inclined floors
- High-grade silicone lip, simple lift height adjustment
- Can be shortened up to the next shorter length on stock
- 7 years warranty

## Lengths

- 459, 584, 709, 834, 959, 1084, 1209, 1334 and 1459 mm

## Surfaces

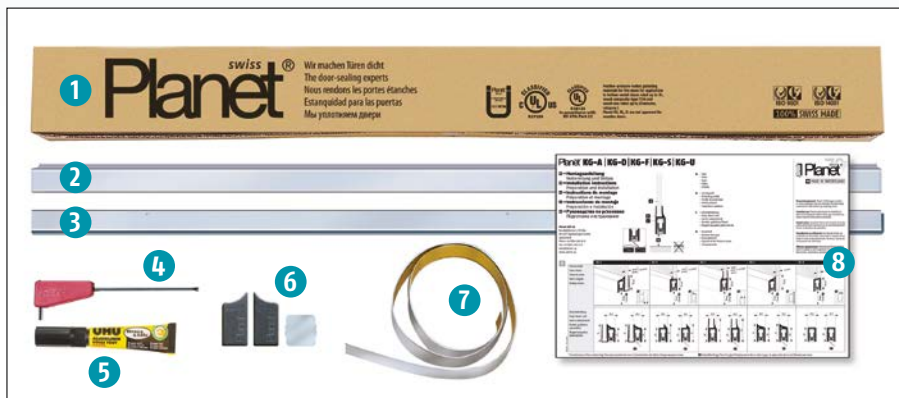
- Protection profile **silver anodised EV1**
- Protection profile **stainless steel satin anodised (option)**

## Assembly material completely enclosed

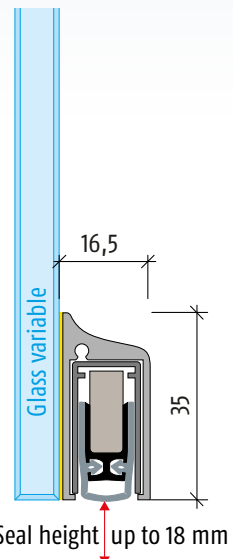
(→ refer to illustration below)

- 1 Packaging
- 2 Protection profile
- 3 Planet drop-down seal
- 4 Allen key
- 5 Installation cement
- 6 Cover plates, frame protector plate
- 7 Adhesive tape
- 8 Assembly instructions

## Complete Planet KG-SM-Set

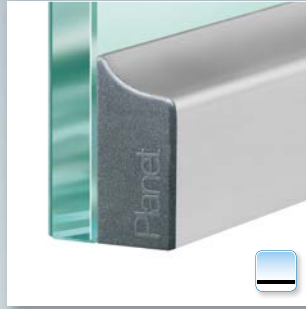


For technical specifications refer to Planet KG-S

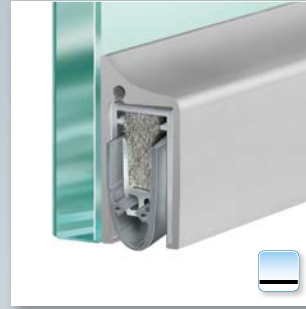




Planet KG-SM, pasted laterally on glass door, release side



Planet KG-SM, with cover plate



Planet KG-SM, pasted laterally on glass door



**Option:** Planet KG-SM, bevel lip for uneven floors



**Option:** Planet KG-SM, laterally pasted on **wooden door**



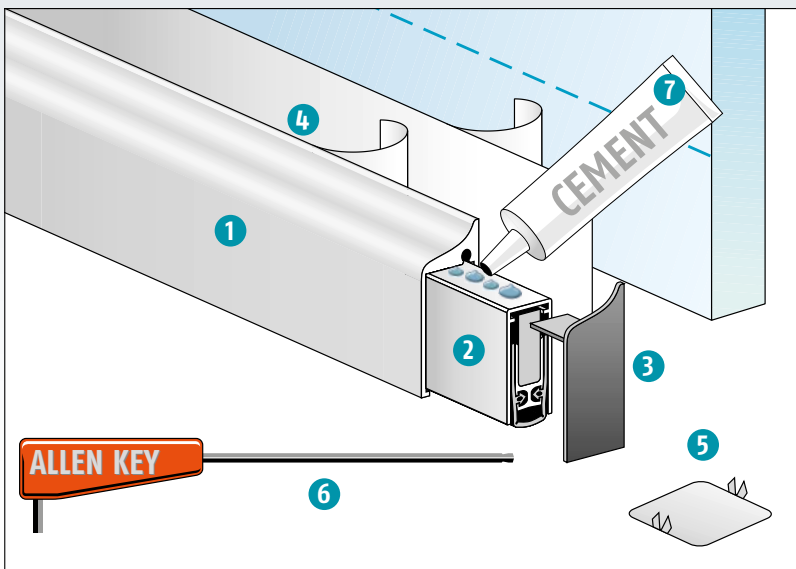
**Option:** Planet KG-SM, laterally pasted on **metal door**



**Option:** Planet KG-SM, laterally pasted on **PVC door**



**Accessories:** Planet frame protector plate, type 1 (stainless), 20 x 20 mm



**Planet KG-SM-Set including**

- ① Protection profile with prepared double-adhesive tape
- ② Planet KG drop-down seal
- ③ Protection profile for cover plates (DIN left / DIN right)
- ④ Aluminum colored foil (only for glass doors)
- ⑤ Frame protector plate
- ⑥ Allen key
- ⑦ Installation cement

**Order specifications / option**

Planet KG-SM-Set → silver anodised EV1	Prod. code 38xxx-SM*
Planet KG-SM-Set → stainless steel satin anodised (option)	Prod. code 900896

\* xxx = refer to price list for profile length