

Hollow Flat Rail to paste

Main features

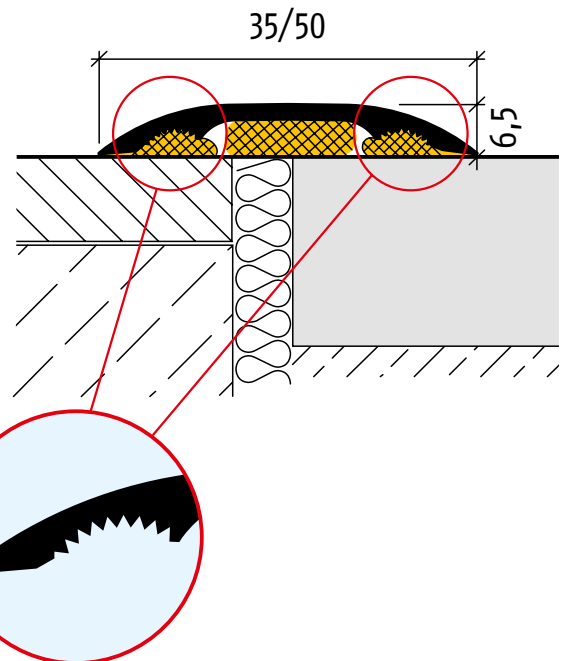
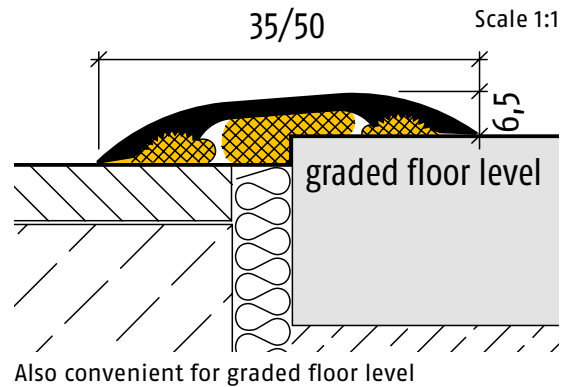
- Hollow flat rail to paste
- optimal connection of two prefabricated floors
- convenient to bridge a level up to 6 mm
- even block surface for all Planet drop-down seals for an optimal sound protection.
- with two toothed adhesive cement grooves for an enlarged surface to make sure an optimal bond
- from 30 dB recommended separation of the supporting floor

Executions

- width 35 or 50 mm
- surfaces: EV1 colorless anodized or brown anodized (Colinal 3165)
- stainless, grinded surfaces on request

Assembly

- paste with flexible cement or sealing material on a surface free of grease and dust (e.g. TEROSTAT 935)
- on any surface, except deep-pile fabrics, they must be cut flush to edge



Advertising text

Planet F Hollow flat rail to paste

Hollow flat rail **Planet F** convenient for graded and even passages. Optimal support surface to glue on. Variants colorless and brown anodized. With two toothed adhesive cement grooves for an enlarged surface to make sure an optimal bond.

Technical specifications

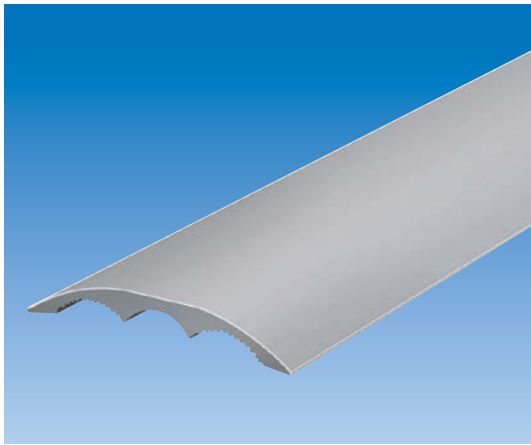
Profile material:	Aluminum, width 35 or 50 mm
Height:	6,5 mm
Color:	EV1 colorless or brown anodized (Colinal 3165)
Lengths on stock:	650, 750, 850, 950, 1050, 1150, 1250, 1350, 1450 mm
Special lengths:	up to 6000 mm
Fastening:	to paste with a flexible cement or sealing material

Hollow Flat Rail to paste

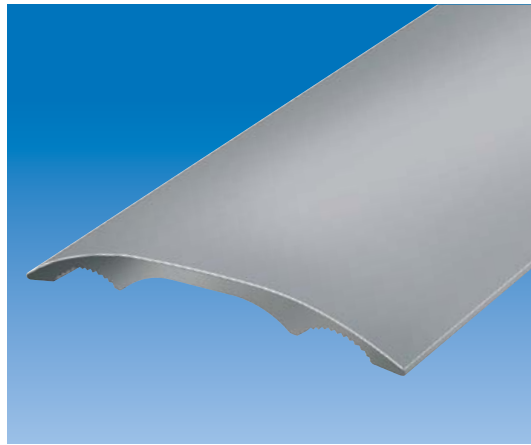
Order specification

- **Planet F 35 mm**, EV1 colorless anodized
Part number 68 xxx*
- **Planet F 35 mm**, brown anodized (Colinal 3165)
Part number 69 xxx*
- **Planet F 50 mm**, EV1 colorless anodized
Part number 48 xxx*
- **Planet F 50 mm**, brown anodized (Colinal 3165)
Part number 49 xxx*

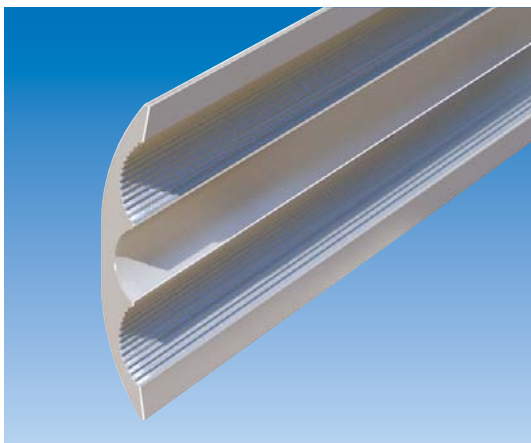
xxx* refer to price list for profile length



Planet F 35 (35 mm wide)



Planet F 50 (50 mm wide)



Planet F profile from bottom, with toothed cement grooves to make sure an optimal bond