



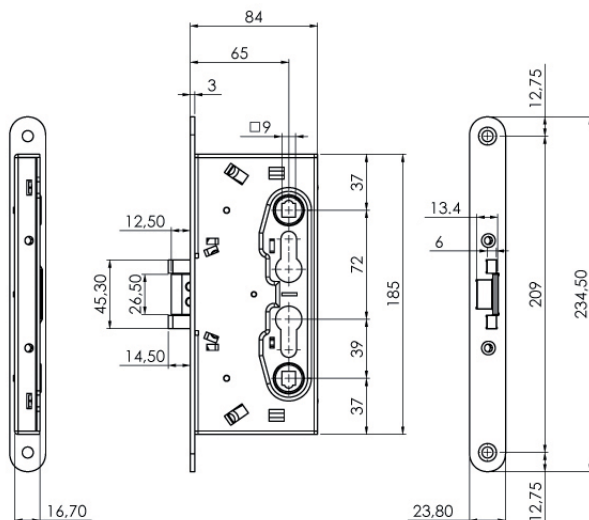
**Locks for  
fire resistant  
doors**





Min. ord.  
Multiple  
package  
Single  
package  
Status  
Code

## Locks for fire resistant doors



### LOCK FOR LEFT- AND RIGHT-HANDED FIRE RESISTANT DOORS.

1 lateral point, deadbolt and latchbolt.

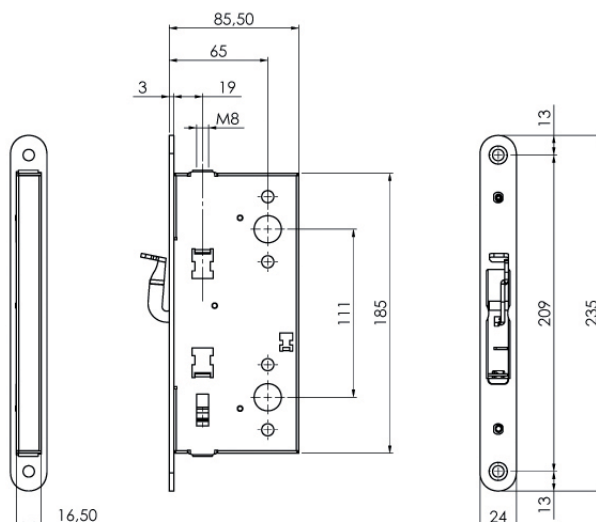
**External and internal: the key operates both the deadbolt and latchbolt, the handle operates the latchbolt only.**

Front plate rounded, mm 24x3, zinc-plated.

Handle follower mm 9. Distance mm 72. Backset mm 65.

Single packaging

**216120654** D 1 10 10



### COUNTERLOCK FOR LEFT- AND RIGHT-HANDED FIRE RESISTANT DOORS.

**FLUSH BOLT function** for secondary leaf, **operation: rods operated by lever on front plate.**

Front plate rounded, mm 24x3, zinc-plated. The threaded rods are connected to the lock by screwing them inside the self fixing connection nut. Rods projection mm 17.

Backset mm 65.

Usable with locks 216\*\*\*, 214\*\*\*.

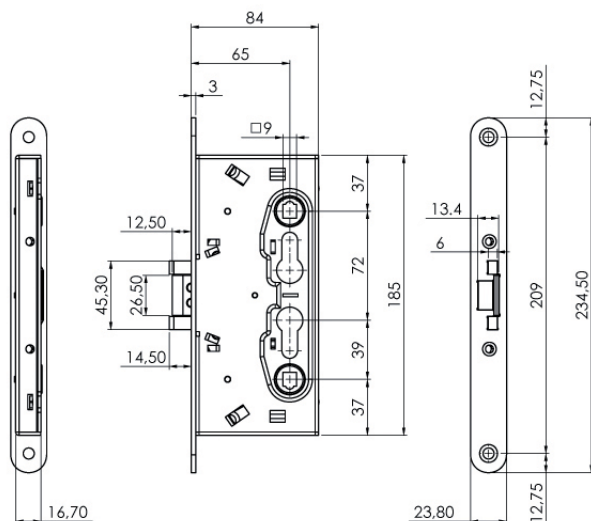
Single packaging

**212000654** D 1 10 10



Min. ord.  
Multiple  
package  
Single  
package  
Status  
Code

## Panic exit mortise locks



### LOCK FOR LEFT- AND RIGHT-HANDED FIRE RESISTANT PANIC EXIT DOORS (EXTERNAL FIXED KNOB).

1 lateral point, deadbolt and latchbolt.

**Internal:** deadbolt and latchbolt operated by the panic exit device, by the handle or by the key

**External:** the key operates both the deadbolt and the latchbolt.

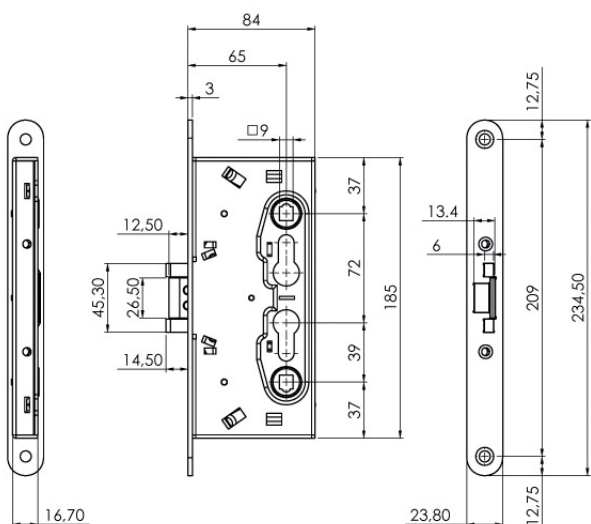
Front plate rounded, mm 24x3, zinc-plated.

Panic exit one-piece follower mm 9. Distance mm 72. Backset mm 65.

Usable with panic exit devices art. 94900005027\* - 9449\*\*\*\*829.

Single packaging

**214140654** D 1 10 10



### LOCK FOR LEFT- AND RIGHT-HANDED FIRE RESISTANT PANIC EXIT DOORS (EXTERNAL HANDLE).

1 lateral point, deadbolt and latchbolt.

**Internal:** deadbolt and latchbolt operated by the panic exit device, by the handle or by the key

**External:** the key operates both the deadbolt and the latchbolt, handle operates latchbolt only.

Front plate rounded, mm 24x3, zinc-plated.

Panic exit two-piece follower mm 9. Distance mm. 72. Backset mm 65

Usable with panic exit devices art. 94900005027\* - 9449\*\*\*\*829.

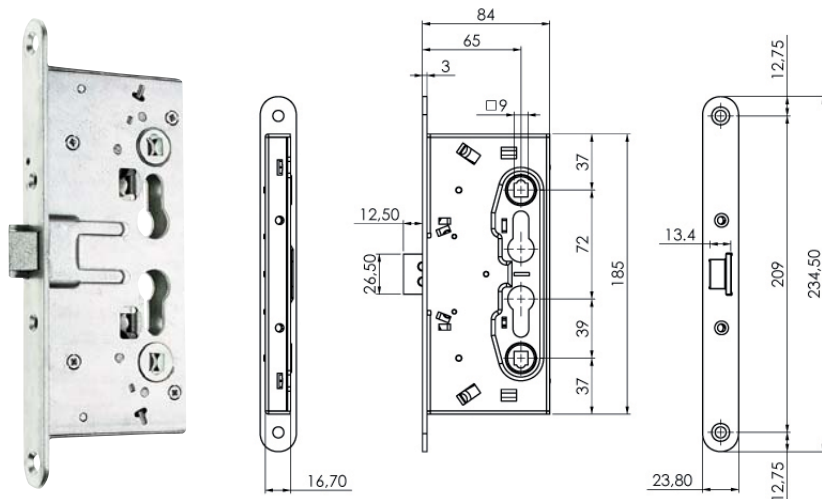
Single packaging

**214120654** D 1 10 10



Min. ord.  
Multiple  
package  
Single  
package  
Status  
Code

## Panic exit mortise locks



### **LOCK FOR LEFT- AND RIGHT-HANDED FIRE RESISTANT PANIC EXIT DOORS (EXTERNAL HANDLE).**

1 lateral point, latchbolt only.

**Internal: latchbolt operated by the panic exit device, by the handle or by the key**

**External: latchbolt operated by the key and by the handle**

**handle operates latchbolt only if enabled by the key**

Front plate rounded, mm 24x3, zinc-plated.

Panic exit two-piece follower mm 9. Distance mm. 72. Backset mm 65.

Usable with panic exit devices art. 94900005027\* - 9449\*\*\*829.

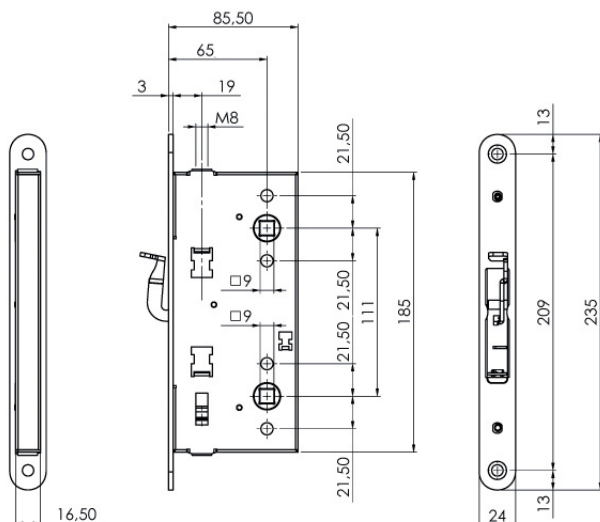
Single packaging

**214110654** D 1 10 10



Min. ord.  
Multiple  
package  
Single  
package  
Status  
Code

## Counterlocks for fire resistant panic exit doors



### COUNTERLOCK SUITABLE FOR USAGE ON REVERSIBLE FIRE RESISTANT PANIC EXIT DOORS.

Can be used on left- and right-handed doors

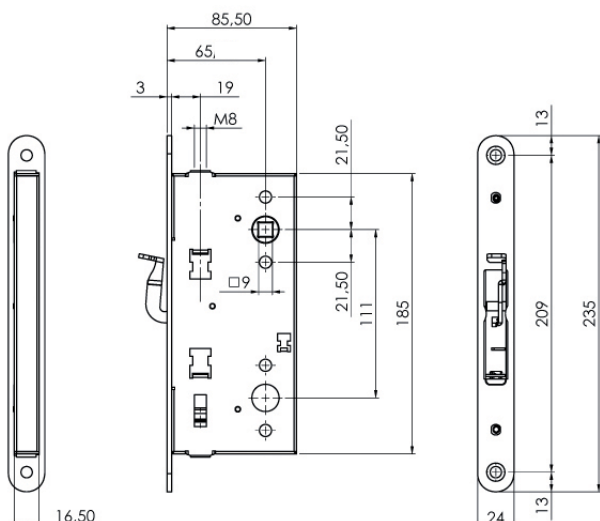
**FLUSH BOLT** and **PANIC EXIT** function for secondary leaf, operation: the panic exit device operates the rods and releases the latchbolt of the lock in the main leaf, the lever on the front plate operates the rods.

Front plate rounded, mm 24x3, zinc-plated. The threaded rods are connected to the lock by screwing them inside the self fixing connection nut. Rods projection mm 17. Backset 65 mm.

Usable with locks 214\*\*\*

Single packaging

**212600654** D 1 10 10



### COUNTERLOCK SUITABLE FOR USAGE ON FIRE RESISTANT PANIC EXIT DOORS.

Can be used on left- and right-handed doors

**FLUSH BOLT** and **PANIC EXIT** function for secondary leaf, operation: the panic exit device operates the rods and releases the latchbolt of the lock in the main leaf, the lever on the front plate operates the rods.

Front plate rounded, mm 24x3, zinc-plated. The threaded rods are connected to the lock by screwing them inside the self fixing connection nut. Rods projection mm 17. Backset 65 mm.

Usable with locks 214\*\*\*

single packaging

**212700654** D 1 10 10

Code  
Status  
Single  
package  
Multiple  
package  
Min. ord.

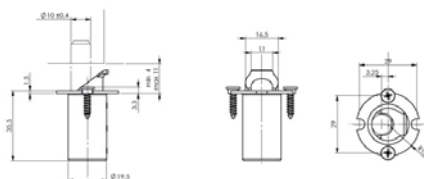
## Accessories



Flat, heavy striking plate, with rounded edge, for panic exit mortise locks, series "PALMO".

ZINC-PLATED steel 235x24x3. For series: 216\*214\*

**032094** B 10 - 10



**Automatic relatching device** for secondary leaf

**032144** D - 10 10



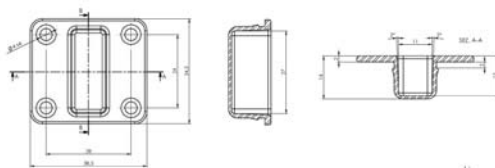
**Distance plate for automatic relatching device**

mm 1

**032714** D - 10 10

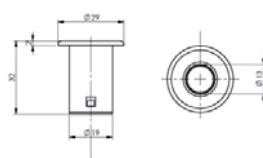
mm 2

**032724** D - 10 10



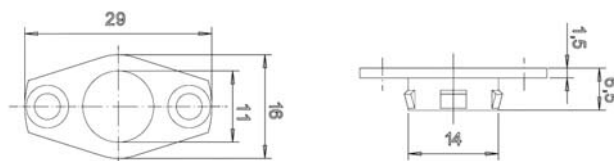
**Rod hasp top** for secondary leaf

**032154** D - 10 10



**Floor strike cup** for secondary leaf

**032164** D - 10 10



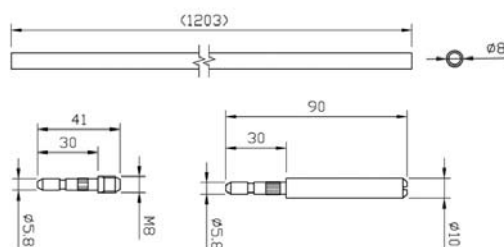
**Rod hasp bottom** for secondary leaf

**032174** D - 10 10



**Steel plate for bottom rod hasp, to be fixed  
on reversible secondary leaves**

**032704** D - 10 10



**Zinc-plated rods for counterlock/flush bolt**

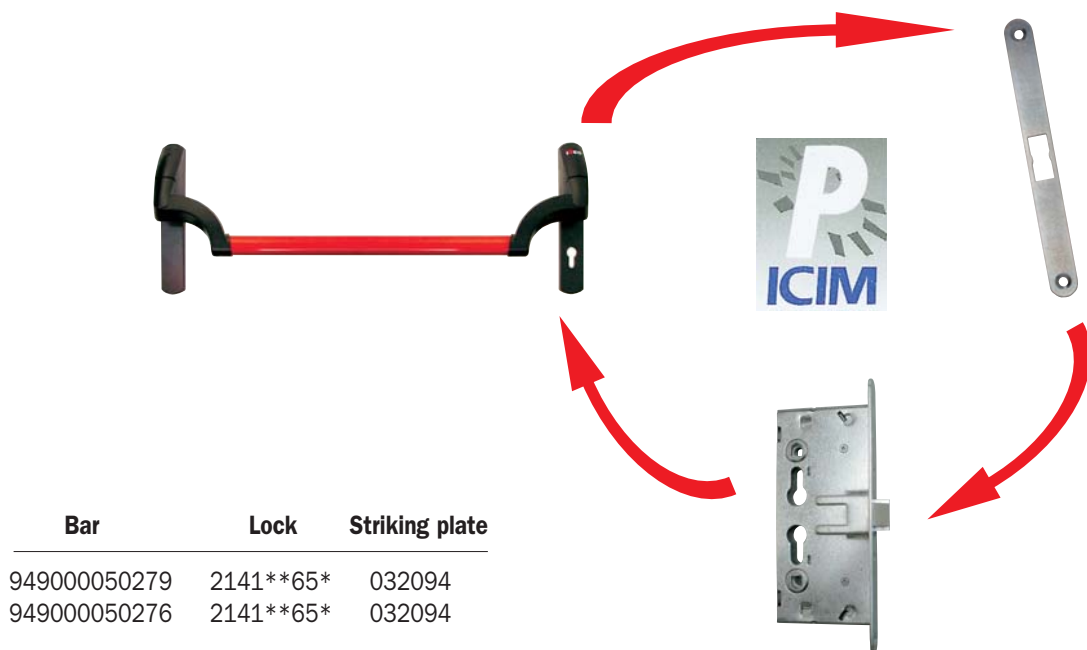
**032184** D 1 - 1





## Palmo for main leaf

The panic exit device for fire resistant doors with mortise lock is made up of a horizontal bar which operates the locking mechanism through the handle follower. The operation of the bar causes the rotation of the handle follower, unlocks the lock and opens the door. Reversible mechanism for usage on right or left handed doors. All versions can be used with a microswitch that signals door openings.



Bar	Lock	Striking plate
949000050279	2141**65*	032094
949000050276	2141**65*	032094

ATTESTATO DI CONFORMITÀ DIRETTIVA 89/106/CEE CERTIFICATE OF CONFORMITY DIRETTIVA 89/106/CEE		CE 0425
Questo certificato è rilasciato in conformità a quanto prescritto dall'Art.6 par.2 lettera b) del DPR 21 aprile 1983, n°246 (Direttiva 89/106/CEE) ed attesta la conformità del prodotto di seguito identificato agli Art.1, Art.2 ed allegato A del DPR 21 aprile 1983, n°246 (Direttiva 89/106/CEE). This certificate has been issued in conformity to what prescribed by the Art.6 par.2 letter b) of the DPR 21/04/1983, n°246 (Directive 89/106/CEE) and certifies the conformity of the product described below to the Art.1, Art.2 and attachment A of DPR 21/04/1983, n°246 (Directive 89/106/CEE).		
ATTESTATO N°	1169 - CPD - 2006	
Organismo notificato	Notified Body	
ICIM S.p.A. - Piazza Don E. Mapelli, 75 - 20099 SESTO SAN GIOVANNI (MI) - ITALY	N° d'identification: 0425	
Dati Fabbricante	Manufacturer	
Sede legale	Head office	
ISEO SERRATURE S.p.A. Via San Geronimo, 13 - 25055 PISOGNE (BS) ITALY		
Unità operativa	Operative unit	
Dati prodotto	Product	
Tipologia	Type	
DISPOSITIVI ANTIPANICO PER USCITE DI SICUREZZA AZIONATI MEDIANTE UNA BARRA ORIZZONTALE PANIC EXIT DEVICES		
Denominazione	Denomination	
Serie "PALMO"		
Modelli/Models:		
9490000*0279 + 9459** + 214654*** + 032094 + 2141**65*, 9490000*0276 + 9459** + 214654*** + 032094 + 2141**65*		
Accessori/Accessories:		
94100160		
Sistema di attestazione della conformità	Attestation of conformity	
1		
Norma di riferimento	Standard	
EN 1125:2008		
Classificazione	Classification	
3   7   6   B   1   4   2   2   A   A		
Eventuali estensioni	Extensions	
Nessuna / None		
Eventuali condizioni di subordinazione della Certificazione CE	Possible conditions of subordination of the CE Certification	
Nessuna / None		
Il presente attestato è valido esclusivamente per il prodotto indicato. Eventuali varianti da apportare devono essere approvate da ICIM S.p.A. The present issue is valid only for the product described above. Possible changes to be brought in have to be approved by ICIM S.p.A.		
Data di emissione First issue	Emissione corrente Current issue	Data di scadenza Expiring date
16/11/2006	02/03/2010	15/11/2016
ICIM S.p.A. Il Presidente Ing. Tullio Badini		

SINCERT		CERTIFICAZIONE DI PRODOTTO PRODUCT CERTIFICATION
CERTIFICATO N°		098AD/1
CERTIFICATE N°		
Nella conclusione del servizio di controllo SINCERT si conforma a quanto richiesto dalla direttiva 89/106/CEE e al documento normativo ICIM.		
ALL AGREEMENT TO THE TYPE		
ISEO SERRATURE S.p.A. Via San Geronimo, 13 PISOGNE (BS) ITALY		
UNIQUE OPERATING / OPERATIONS UNIT		
PER I SEGUENTI PRODOTTI / FOR THE FOLLOWING PRODUCTS		
DISPOSITIVI ANTIPANICO PER USCITE DI SICUREZZA AZIONATI MEDIANTE UNA BARRA ORIZZONTALE PANIC EXIT DEVICES		
CON DENOMINAZIONE COMPLESSIVA / WITH TRADE MARK		
serie PALMO		
mod. 9490000*0279 + 9459** + 214654*** + 032094 + 2141**65*, 9490000*0276 + 9459** + 214654*** + 032094 + 2141**65*		
ACCESSORI mod. 94100160		
CONFORMITÀ ALLA NORMA ED AL DOCUMENTO NORMATIVO ICIM IN COMPLIANCE WITH THE STANDARD AND WITH ICIM NORMATIVE DOCUMENT		
UNI EN 1125:08 - ICIM 70R010		
CON CLASSIFICAZIONE / WITH CLASSIFICATION		
3   7   6   B   1   4   2   2   A   A		
L'utente deve utilizzare il prodotto di proprietà ICIM in conformità con le istruzioni per l'uso.		
The user must use ICIM mark of conformity for the product according to ICIM Regulation for product installation.		
Prima Emissione First issue	Emissione corrente Current issue	Data di scadenza Expiring date
16/11/2006	18/02/2010	15/11/2012
ICIM S.p.A. Il Presidente Ing. Tullio Badini		

The ICIM certification as per EN1125 is only valid if the operating bars listed in this page are used in conjunction with Iseo locks and striking plates, as indicated in the table.

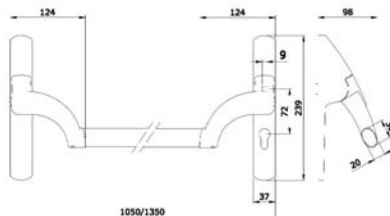
Whoever uses a certified panic exit device in conjunction with locks/counterlocks/accessories and/or striking plates different from the ones specified by Iseo shall be responsible for compliance with EN 1125.





Code  
Status  
Single  
package  
Multiple  
package  
Min. ord.

## **Palmo** for main leaf



“**PALMO**” panic exit device for FIRE RESISTANT doors, **FOR MAIN LEAF, REVERSIBLE**, can be used with panic exit mortise locks with 9 mm handle follower, **WITH CYLINDER HOLE**. Center distance mm 72, with handle follower rotation **20°**. BLACK painted mechanism. Templates. Assembly instructions. SQUARE SPINDLE NOT INCLUDED. CE EN1125 mark and ICIM product certification.

### **Accessories to be ordered separately:**

Panic exit lock 2141\*\*65\*

Bar 9459\*

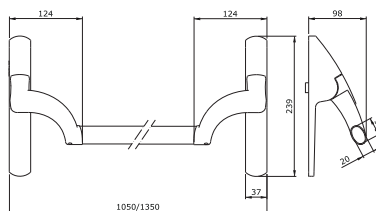
Striking plate 032094

Kit of thermoexpanding gaskets 94000020

Square spindle 947910 - 947920

With cylinder hole

**949000050279** A 1 - 1



“**PALMO**” panic exit device for FIRE RESISTANT doors, **FOR MAIN LEAF, REVERSIBLE**, can be used with panic exit mortise locks with 9 mm handle follower, **WITHOUT CYLINDER HOLE**, with handle follower rotation **20°**. Black painted mechanism. Templates. Assembly instructions. SQUARE SPINDLE NOT INCLUDED. CE EN1125 mark and ICIM product certification.

### **Accessories to be ordered separately:**

Panic exit lock 2141\*\*65\*

Bar 9459\*

Striking plate 032094

Kit of thermoexpanding gaskets 94000020

Square spindle 947910 - 947920

Without cylinder hole

**949000050276** C 1 - 1

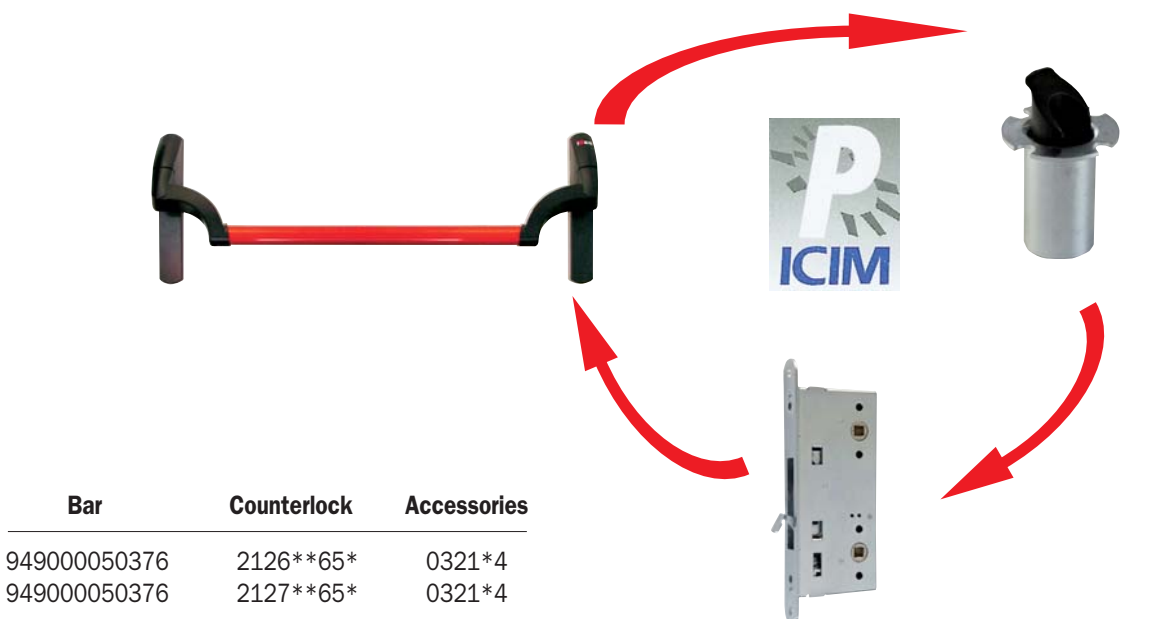
The ICIM certification as per EN1125 is only valid if the operating bars listed in this page are used in conjunction with Iseo locks and striking plates, as indicated in the table on the previous page.



## Palmo for secondary leaf

The panic exit device for fire resistant doors with mortise counterlock is made up of a horizontal bar which operates the locking mechanism through the handle follower.

The operation of the bar causes the rotation of the handle follower of the counterlock, by which the upper and the lower rod will move inside, the latchbolt of the panic exit lock in the main leaf will be released and both leaves can be opened. Reversible mechanism for usage on right or left handed doors. All versions can be used with a microswitch that signals door openings.



Bar	Counterlock	Accessories
949000050376	2126**65*	0321*4
949000050376	2127**65*	0321*4

ATTESTATO DI CONFORMITÀ DIRETTIVA 89/106/CEE CERTIFICATE OF CONFORMITY DIRETTIVE 89/106/CEE		CE
ATTESTATO N°	2150 - CPD - 2010	CERTIFICATE N°
Organismo notificato	ICIM S.p.A. - Piazza Don E. Mapelli, 75 - 20099 SESTO SAN GIOVANNI (MI) - ITALY	Notified Body
Dati Fabbricante	ISEO SERRATURE S.p.A. Via San Girolamo, 13 - 25055 PISOGNE (BS) ITALY	Manufacturer
Sede legale	ISEO SERRATURE S.p.A. Via San Girolamo, 13 - 25055 PISOGNE (BS) ITALY	Head office
Unità operativa		Operative unit
Dati prodotto	Dispositivi antipanco per uscite di sicurezza azionati mediante una barra orizzontale Panic exit devices	Product
Tipologia	Dispositivi antipanco per uscite di sicurezza azionati mediante una barra orizzontale	Type
Denominazione	Serie PALMO anta secondaria Series PALMO inactive leaf	Denomination
Modelli/Models:	9490000**37* + 9459** + 2126**65* + 0321** 9490000**37* + 9459** + 2127**65* + 0321**	
Sistema di attestazione della conformità	1	Attestation of conformity
Norma di riferimento	EN 1125:2008	Standard
Classificazione	3   7   6   B   1   4   2   2   A   C	Classification
Eventuali estensioni	Nessuna / None	Extensions
Eventuali condizioni di subordinazione della Certificazione CE	Nessuna / None	Possible conditions of subordination of the CE Certification
Data di emissione First issue	15/03/2010	Emissione corrente Current issue
	05/05/2010	
Data di scadenza Expiring date	15/03/2020	
		ICIM S.p.A. Il Presidente Ing. Tullio Badino

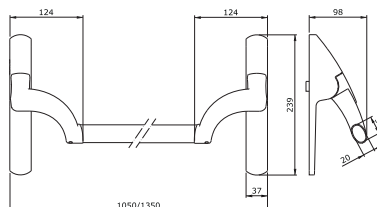
CERTIFICAZIONE DI PRODOTTO PRODUCT CERTIFICATION	
CERTIFICATO N°	125AD/0
CERTIFICATE N°	
SEDE CONSEGNA DEL PRODOTTO (SEAT OF THE PRODUCT)	ISEO SERRATURE S.p.A. Via San Girolamo, 13 PISOGNE (BS) ITALY
UNITÀ OPERATIVE / OPERATIVES UNITS	
PER I SEGUENTI PRODOTTI / FOR THE FOLLOWING PRODUCTS	
DISPOSITIVI ANTIPANICO PER USCITE DI SICUREZZA AZIONATI MEDIANTE UNA BARRA ORIZZONTALE Panic exit devices	
CONFORMITÀ CON I REQUISITI DI PRODOTTO / WITH THE REQUIREMENTS	
Serie PALMO anta secondaria Series PALMO inactive leaf	
Modelli / Models	9490000**37* + 9459** + 2126**65* + 0321** 9490000**37* + 9459** + 2127**65* + 0321**
CONFORMITÀ ALLA NORMA EN 1125-08 / IN COMPLIANCE WITH THE STANDARD EN 1125-08	
UNI EN 1125-08 - ICIM 70R010	
CON CLASSIFICAZIONE / WITH CLASSIFICATION	
3   7   6   B   1   4   2   2   A   C	
Prima Emissione First issue	15/03/2010
Emissione corrente Current issue	05/05/2010
Data di scadenza Expiring date	14/03/2013
	ICIM S.p.A. Il Presidente Ing. Tullio Badino

The ICIM certification as per EN1125 is only valid if the operating bars listed in this page are used in conjunction with Iseo counterlocks and accessories, as indicated in the table. Whoever uses a certified panic exit device in conjunction with locks/counterlocks/accessories and/or striking plates different from the ones specified by Iseo shall be responsible for compliance with EN 1125.



Min. ord.  
Multiple  
package  
Single  
package  
Status  
Code

## **Palmo** for secondary leaf



“**PALMO**” panic exit devicer for FIRE RESISTANT doors, **FOR SECONDARY LEAF, REVERSIBLE**, to be used with mortise counterlock with 9 mm handle follower, **WITHOUT CYLINDER HOLE**, with handle follower rotation **30°**. BLACK painted mechanism. Templates. Assembly instructions. SQUARE SPINDLE NOT INCLUDED. CE EN1125 mark and ICIM product certification.

**Accessories to be ordered separately:**

Counterlock 2126\*\*65\* / Counterlock 2127\*\*65\*

Bar 9459\*

Kit of thermoexpanding gaskets 94000020

Accessories 0321\*4

Square spindle 947930

Without cylinder hole

**949000050376** D 1 - 1

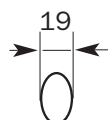
The ICIM certification as per EN1125 is only valid if the operating bars listed in this page are used in conjunction with Iseo counterlocks and accessories, as indicated in the table on the previous page.

Code  
Status  
Single  
package  
Multiple  
package  
Min. ord.

## Accessories



**Horizontal oval bar** for panic exit devices “PALMO” **SERIES 9490** Length mm **1130**



Stainless steel

**945922** A 1 - 1



Painted grey

**945923** B 1 - 1



Painted white

**945924** C 1 - 1



Painted black

**945925** C 1 - 1



Painted red

**945928** A 1 - 1

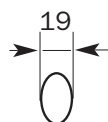


Painted green

**945929** D 1 - 1



**Horizontal oval bar** for panic exit devices “PALMO” **SERIES 9490** Length mm **1330**



Stainless steel

**945932** A 1 - 1



Painted red

**945938** A 1 - 1



**Microswitch**, to be fitted in the “PALMO” **SERIES 9490** panic exit devices.

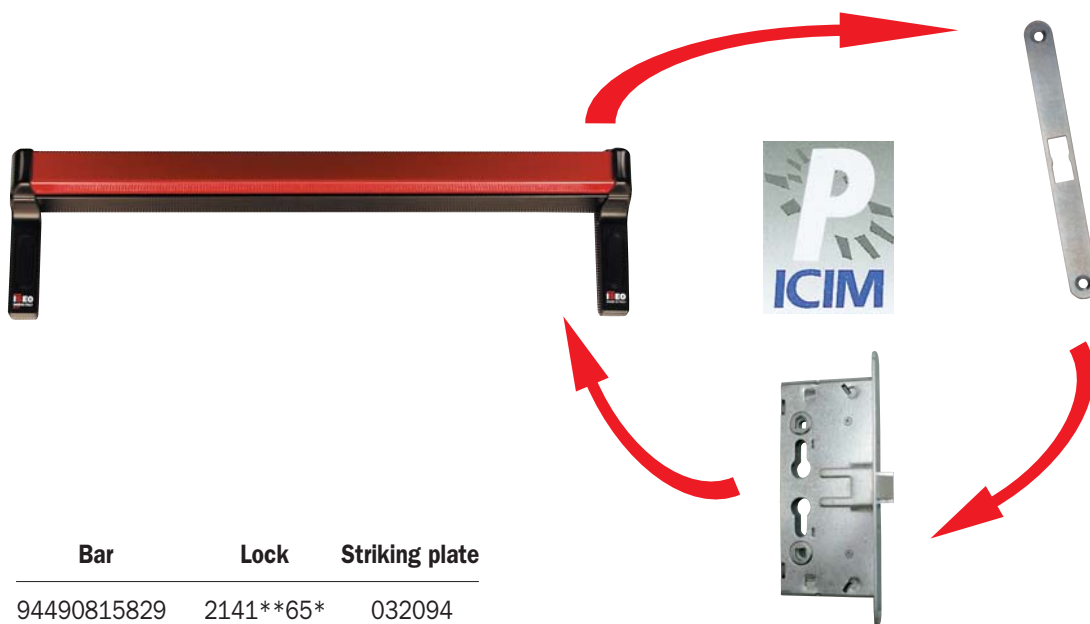
Can be used in conjunction with security systems. Fixing screws. Instructions sheet.

**94100160** D 1 - 1



## Push-Palmo for main leaf

The panic exit device for fire resistant doors with mortise lock is made up of a horizontal bar which operates the locking mechanism through the handle follower. The operation of the bar causes the rotation of the handle follower, unlocks the lock and opens the door. Supplied in sizes mm 811 and 1161, shortenable to mm 330, mechanism for usage on right- or left-handed doors. All versions can be used with a microswitch that signals door openings.



Bar	Lock	Striking plate
94490815829	2141**65*	032094
94491165829	2141**65*	032094

ATTESTATO DI CONFORMITÀ DIRETTIVA 89/106/CEE CERTIFICATE OF CONFORMITY DIRETTIVE 89/106/CEE		CE 0425
Questo certificato è rilasciato in conformità a quanto prescritto dall'Art.6 par.2 lettera b) del DPR 21 aprile 1993, n°246 (Direttiva 89/106/CEE) ed attesta la conformità del prodotto di seguito identificato agli Art.1, Art.2 e allegato A del DPR 21 aprile 1993, n°246 (Direttiva 89/106/CEE).		
ATTESTATO N°	2152 - CPD - 2010	CERTIFICATE N°
Organismo notificato	ICIM S.p.A. - Piazza Don E. Mapelli, 75 - 20099 SESTO SAN GIOVANNI - MILANO (ITALY)	Notified Body Identification N°: 0425
Dati Fabbricante	ISEO SERRATURE S.p.A. Via San Girolamo, 13 - 25055 PISOGNE (BS) ITALY	Manufacturer Head office Operative unit
Dati prodotto	DISPOSITIVI ANTIPANICO PER USCITE DI SICUREZZA AZIONATI MEDIANTE UNA BARRA ORIZZONTALE PANIC EXIT DEVICES Denominazione Serie PUSH-PALMO anta principale Serie PUSH-PALMO active leaf mod. I 9449070529* + 214054*** + 832094 + 2141**65* 94490815829 + 214054*** + 832094 + 2141**65* 94491165829 + 214054*** + 832094 + 2141**65* ACCESSORI: 944909029 + 94490930	Product Type
Sistema di attestazione della conformità	1	Attestation of conformity
Norma di riferimento	EN 1125:2008	Standard
Classificazione	3 7 6 B 1 4 2 2 B A	Classification
Eventuali estensioni	Nessuna / None	Extensions
Eventuali condizioni di subordinazione della Certificazione CE	Nessuna / None	Possible conditions of subordination of the CE Certification
Il presente attestato è valido esclusivamente per il prodotto indicato. Eventuali varianti da apportare devono essere approvate da ICIM S.p.A. The present issue is valid only for the product described above. Possible changes to be brought to light to be approved by ICIM S.p.A.		
Data di emissione First issue	15/04/2010	Emissione corrente Current issue
Data di scadenza Expiry date	14/04/2020	Il Presidente Ing. Tullio Badino

SINCERT		CERTIFICAZIONE DI PRODOTTO PRODUCT CERTIFICATION
CERTIFICATO N° CERTIFICATE N°		004AD/3
NELLA CONCESSIONE DEL DIRITTO DI USARE IL MARCHIO DI CONFORMITÀ PER IL PRODOTTO DESCRITTO IN QUESTO DOCUMENTO		ISEO SERRATURE S.p.A. Via San Girolamo, 13 PISOGNE (BS) ITALY
CON DENOMINAZIONE COMMERCIALE / WITH TRADE NAME		serie PUSH-PALMO mod. I 9449070529* + 214054*** + 832094 + 2141**65* 94490815829 + 214054*** + 832094 + 2141**65* 94491165829 + 214054*** + 832094 + 2141**65* ACCESSORI 944909029, 94490930, 94490930, 94490930, 94490930, 94490930, 94490930, 94490930
CON CLASSIFICAZIONE / WITH CLASSIFICATION		3 7 6 B 1 4 2 2 B A
Prima Emissione First issue	20/01/2000	Emissione corrente Current issue
Data di scadenza Expiry date	19/01/2012	Il Presidente Ing. Tullio Badino

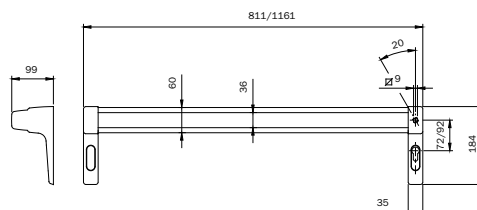
The ICIM certification as per EN1125 is only valid if the operating bars listed in this page are used in conjunction with Iseo locks and striking plates, as indicated in the table.

Whoever uses a certified panic exit device in conjunction with locks/counterlocks/accessories and/or striking plates different from the ones specified by Iseo shall be responsible for compliance with EN 1125.



Code  
Status  
Single  
package  
Multiple  
package  
Min. ord.

## Push-Palmo for main leaf



“**PUSH PALMO**” panic exit device for FIRE RESISTANT doors, **FOR MAIN LEAF, REVERSIBLE**, to be used with a panic exit mortise lock. **CENTER DISTANCE 72. WITH CYLINDER HOLE**, with handle follower rotation **20°**. Mechanism in red/black painted finish. Cover for 72 mm. Templates. Assembly instructions. SQUARE SPINDLE NOT INCLUDED. CE EN1125 mark and ICIM product certification.

### To be ordered separately:

Panic exit lock 2141\*\*65\*

Striking plate 032094

Kit of thermoexpanding gaskets 94000020

Microswitch 94400030.

Square spindle 947910 - 947920

Length mm 811

**94490815829** A 1 - 1

Length mm 1161

**94491165829** B 1 - 1



Microswitch detecting door openings, to be fitted in the “**PUSH PALMO**” **SERIES 9449** mechanism.

Can be used in conjunction with security systems. Instructions sheet.

**94400030** D 1 - 1



Cover with hole for European profile cylinder for “**PUSH PALMO**” bars **SERIES 9449**

for panic exit mortise locks with **center distance 72/92 mm**. In BLACK painted zinc diecast.

**040840** D 10 - 10

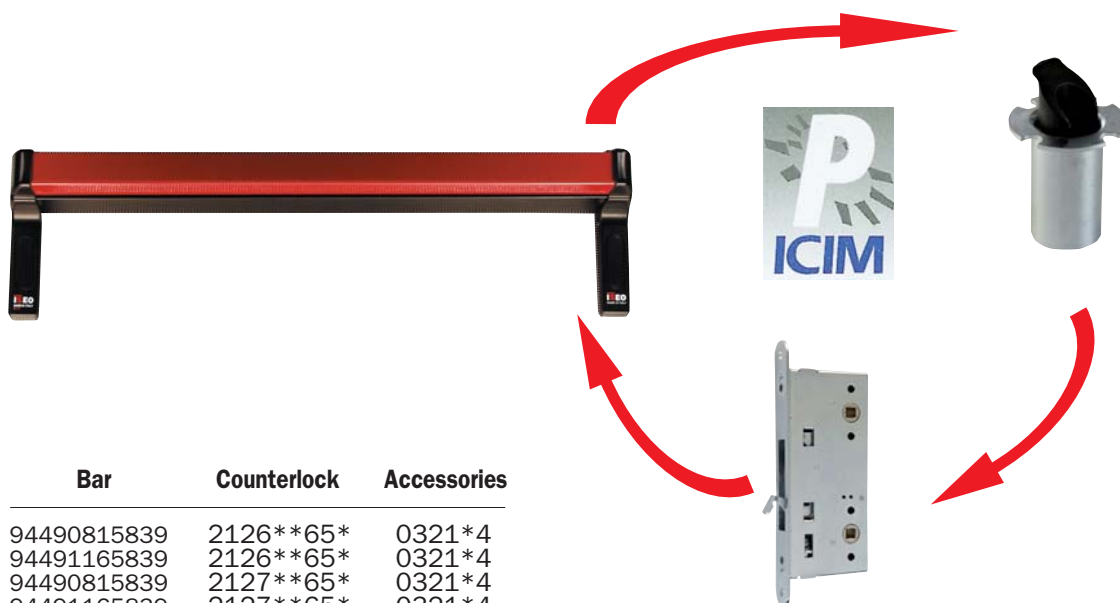
The ICIM certification as per EN1125 is only valid if the operating bars listed in this page are used in conjunction with Iseo locks and striking plates, as indicated in the table on the previous page.





## Push-Palmo for secondary leaf

The panic exit device for fire resistant doors with mortise counterlock is made up of a horizontal bar which operates the locking mechanism through the handle follower. The operation of the bar causes the rotation of the handle follower of the counterlock, by which the upper and lower rod will move inside, the latchbolt of the panic exit lock in the main leaf will be released and both leaves can be opened. Supplied in sizes mm 811 and 1161, shortenable to mm 330, reversible mechanism in red/black finish for usage on right- or left-handed doors. All versions can be used with a microswitch that signals door openings.



Bar	Counterlock	Accessories
94490815839	2126**65*	0321*4
94491165839	2126**65*	0321*4
94490815839	2127**65*	0321*4
94491165839	2127**65*	0321*4

**ATTESTATO DI CONFORMITÀ**  
DIRETTIVA 89/106/CEE  
**CERTIFICATE OF CONFORMITY**  
DIRETTIVA 89/106/CEE

Questo certificato è rilasciato in conformità a quanto prescritto dall'Art. 6 par. 2 lettera b) del DPR 21 aprile 1981, n°248 (Direttiva 89/106/CEE) ed attesta la conformità del prodotto di seguito identificato agli Art. 1, Art.2 ed allegato A del DPR 21 aprile 1981, n°248 (Direttiva 89/106/CEE) and certifies the conformity of the product described below to the Art. 1, Art.2 and attachment A of DPR 21 April 1981, n°248 (Directive 89/106/EEC)

<b>Attestato N°</b>	<b>2151 - CPD - 2010</b>	<b>CERTIFICATE N°</b>
<b>Organismo notificato</b>	ICIM S.p.A. - Piazza Don E. Mapelli, 75 - 20099 SESTO SAN GIOVANNI (MI) - ITALY	<b>Notified Body</b>
<b>Dati fabbricante</b>	ISEO SERRATURE S.p.A. Via San Girolamo, 13 - 25055 PISOONE (BS) ITALY	<b>Manufacturer</b>
<b>Sede legale</b>	Unità operativa	<b>Head office</b>
<b>Dati prodotto</b>	<b>Product</b>	
Tipologia	DISPOSITIVI ANTIPANICO PER USCITE DI SICUREZZA AZIONATI MEDIANTE UNA BARRA ORIZZONTALE PANIC EXIT DEVICES	Type
Denominazione	Serie PUSH-PALMO anta secondaria Series PUSH-PALMO inactive leaf	Denomination
Modelli / Models	9449081**39 + 2126**65* + 0321** 9449116**39 + 2126**65* + 0321** 9449081**39 + 2127**65* + 0321** 9449116**39 + 2127**65* + 0321**	
Sistema di valutazione della conformità	1	Attestation of conformity
Norma di riferimento	EN 1125:2008	Standard
Classificazione	3   7   6   B   1   4   2   2   B   C	Classification
Eventuali estensioni	Nessuna / None	Extensions
Eventuali condizioni di subordinazione della Certificazione CE	Nessuna / None	Possible conditions of subordination of the CE Certification

Il presente attestato è valido esclusivamente per il prodotto indicato. Eventuali varianti da apportare devono essere approvate da ICIM S.p.A.  
The present issue is valid only for the product described above. Possible changes to be brought in have to be approved by ICIM S.p.A.

Data di emissione / First issue: 15/03/2010  
Emissione corrente / Current issue: 05/05/2010  
Data di scadenza / Expiring date: 15/03/2020

ICIM S.p.A.  
Il Presidente  
Ing. Tullio Badino

**SINCERT**

**CERTIFICAZIONE DI PRODOTTO**  
**PRODUCT CERTIFICATION**

Questo certificato è rilasciato in conformità a quanto prescritto dall'Art. 6 par. 2 lettera b) del DPR 21 aprile 1981, n°248 (Direttiva 89/106/CEE) ed attesta la conformità del prodotto di seguito identificato agli Art. 1, Art.2 ed allegato A del DPR 21 aprile 1981, n°248 (Direttiva 89/106/CEE) and certifies the conformity of the product described below to the Art. 1, Art.2 and attachment A of DPR 21 April 1981, n°248 (Directive 89/106/EEC)

<b>Certificato N°</b>	<b>126AD/0</b>
<b>CERTIFICATE N°</b>	
<b>Organismo notificato</b>	ICIM S.p.A. - Piazza Don E. Mapelli, 75 - 20099 SESTO SAN GIOVANNI (MI) - ITALY
<b>Dati fabbricante</b>	ISEO SERRATURE S.p.A. Via San Girolamo, 13 - 25055 PISOONE (BS) ITALY
<b>Sede legale</b>	Unità operativa
<b>Dati prodotto</b>	<b>Product</b>
Tipologia	DISPOSITIVI ANTIPANICO PER USCITE DI SICUREZZA AZIONATI MEDIANTE UNA BARRA ORIZZONTALE PANIC EXIT DEVICES
Denominazione	Serie PUSH-PALMO anta secondaria Series PUSH-PALMO inactive leaf
Modelli / Models	9449081**39 + 2126**65* + 0321** 9449116**39 + 2126**65* + 0321** 9449081**39 + 2127**65* + 0321** 9449116**39 + 2127**65* + 0321**
Sistema di valutazione della conformità	1
Norma di riferimento	EN 1125:2008
Classificazione	3   7   6   B   1   4   2   2   B   C
Eventuali estensioni	Nessuna / None
Eventuali condizioni di subordinazione della Certificazione CE	Nessuna / None

Il presente attestato è valido esclusivamente per il prodotto indicato. Eventuali varianti da apportare devono essere approvate da ICIM S.p.A.  
The present issue is valid only for the product described above. Possible changes to be brought in have to be approved by ICIM S.p.A.

Data di emissione / First issue: 15/03/2010  
Emissione corrente / Current issue: 05/05/2010  
Data di scadenza / Expiring date: 14/03/2013

ICIM S.p.A.  
Il Presidente  
Ing. Tullio Badino

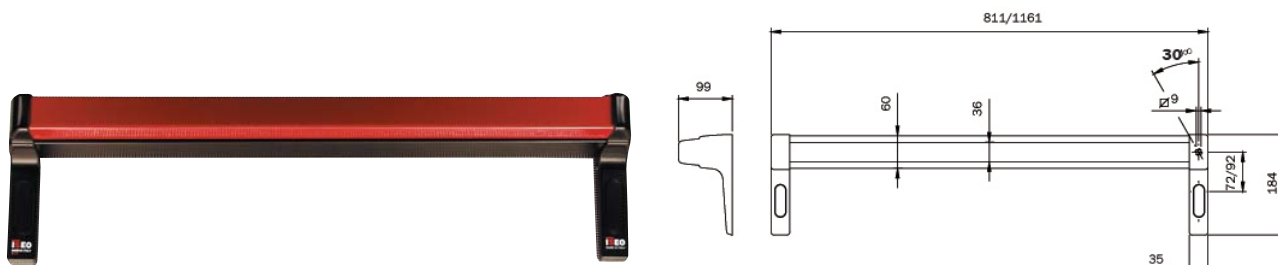
The ICIM certification as per EN1125 is only valid if the operating bars listed in this page are used in conjunction with Iseo counterlocks and accessories, as indicated in the table.

Whoever uses a certified panic exit device in conjunction with locks/counterlocks/accessories and/or striking plates different from the ones specified by Iseo shall be responsible for compliance with EN 1125.



Code  
Status  
Single package  
Multiple package  
Min. ord.

## Push-Palmo for secondary leaf



“**PUSH PALMO**” panic exit device for FIRE RESISTANT doors, **FOR SECONDARY LEAF, REVERSIBLE**, to be used with mortise counterlocks with 9 mm handle follower, **WITHOUT CYLINDER HOLE**, with handle follower rotation of **30°**. Mechanism in red/black painted finish. Template. Assembly instructions SQUARE SPINDLE NOT INCLUDED.

**To be ordered separately:**

Counterlock 2126\*\*65\* / Counterlock 2127\*\*65\*

Kit of thermoexpanding gaskets 94000020

Accessories 0321\*4

Microswitch 94400030

Square spindle 947930

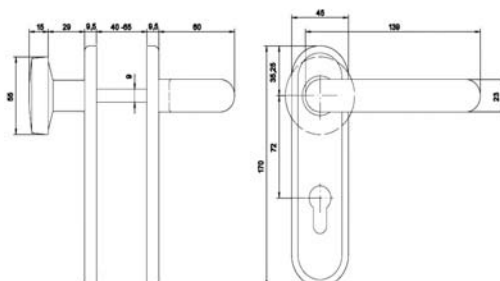
Length mm 811	<b>94490815839</b>	C	1	-	1
Length mm 1161	<b>94491165839</b>	C	1	-	1

The ICIM certification as per EN1125 is only valid if the operating bars listed in this page are used in conjunction with Iseo counterlocks and accessories, as indicated in the table on the previous page.



Code  
Status  
Single package  
Multiple package  
Min. ord.

## Accessories



### Handle set with knob and cylinder hole.

For fire resistant doors and panic exit fire resistant doors **EN179**.

Supplied with: handle follower mm 80, fixing screws for doors up to mm 63

With cylinder hole STAINLESS STEEL

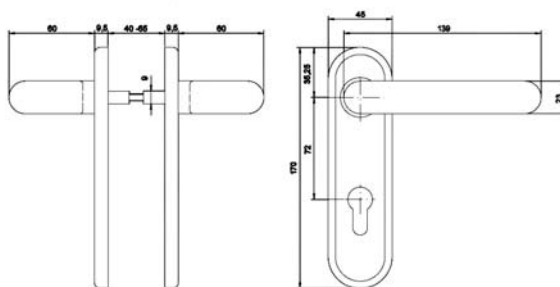
**032402** D 1 30 30

With cylinder hole grey

**032403** D 1 30 30

With cylinder hole black

**032405** D 1 30 30



### Handle set with cylinder hole.

For fire resistant doors and panic exit fire resistant doors **EN179**.

Supplied with: handle follower mm 125, fixing screws for doors up to mm 63

With cylinder hole STAINLESS STEEL

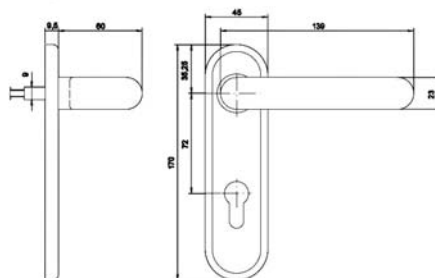
**032412** D 1 30 30

With cylinder hole grey

**032413** D 1 30 30

With cylinder hole black

**032415** D 1 30 30



### Plate with handle and cylinder hole.

For fire resistant doors and panic exit fire resistant doors.

Supplied with: fixing screws for doors up to mm 63

With cylinder hole grey

**032433** D 1 30 30

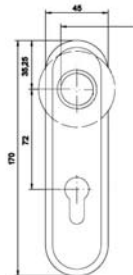
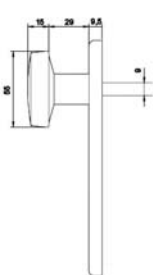
With cylinder hole black

**032435** D 1 30 30



Code  
Status  
Single  
package  
Multiple  
package  
Min. ord.

## Accessories



### Plate with knob.

For fire resistant doors and panic exit fire resistant doors.

Supplied with: fixing screws for doors up to mm 63

**With cylinder hole** black

**032465** D 1 30 30

**Without cylinder hole** grey

**032423** D 1 30 30

**Without cylinder hole** black

**032425** D 1 30 30



### External plate without handle/knob.

For fire resistant doors and panic exit fire resistant doors.

Supplied with: fixing screws for doors up to mm 63

**With cylinder hole** black

**032445** D 1 30 30

**Without cylinder hole** black

**032455** D 1 30 30



Square spindle mm 9, length **mm 125**

**947900** D 10 - 10



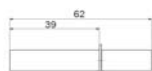
**Splitted** square spindle mm 9

**mm 55/38**

**947910** D 10 - 10

**mm 55/55**

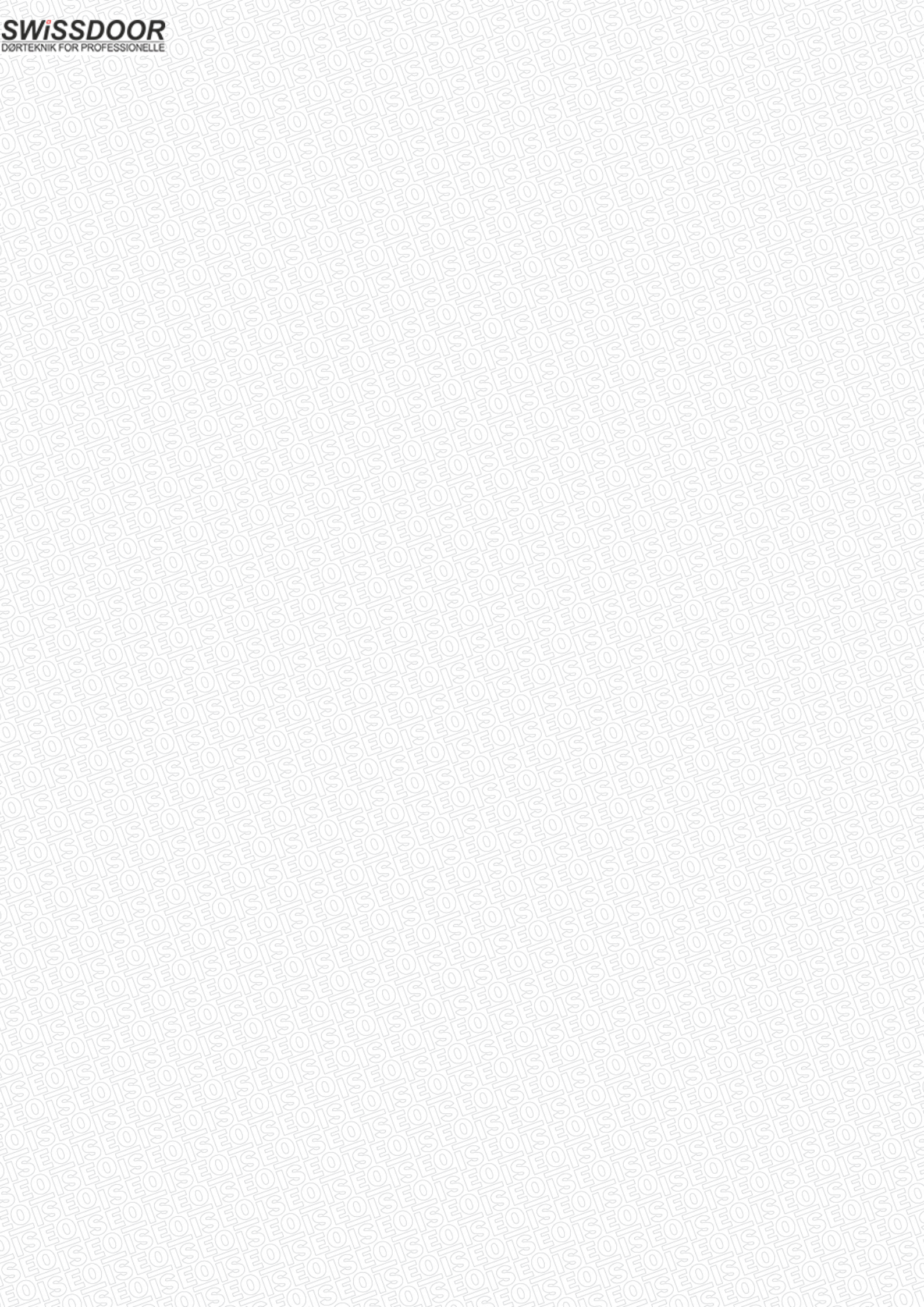
**947920** D 10 - 10



Square spindle mm 9, length **mm 62**, with seeger

**947930** B 10 - 10







**Danish Seller**

**Swissdoor ApS**  
Stenhuggervej 2  
5471 Soendersoe  
Denmark  
VAT nr.: 32084222  
Tlf. nr.: +45 8628 0000  
mail@swissdoor.dk  
www.swissdoor.dk