

## RFGate 3



Wireless signal transmission system for safety edges and wicket doors on industrial doors and gates

### Durable, compatible, safe

- Highest level on the market with PLd, cat. 3
- Safe signal transmission for all controllers
- Elegant housing design with protection class IP65

# RFGate 3

## Wireless signal transmission system for safety edges and wicket doors on industrial doors and gates

### Next level of safety

Ever faster gates paired with a high need for security are placing exacting requirements on the safety equipment for gates and also on the signal transmission of tactile sensors. To overcome this and ensure a high level of safety, BBC Bircher is taking its wireless signal transmission system to the next level: RFGate 3 with PLd and category 3.

RFGate 3 with category 3 is self-monitoring and eliminates the need for connecting a test input. This enables secure safety edge monitoring at every controller – even without a test output. By shifting the safety-relevant functions from the controller to the wireless transmission system, RFGate 3 meets the strictest level of safety required on the market while simultaneously facilitating the start-up process.



### Benefits

- Safe signal transmission with PLd, cat. 3
- High interference immunity and range up to 100 m
- Compatible with all standard controllers
- Simple start-up as there is no connection to the test output
- Slim and elegant housing with protection class IP65 and integrated cable strain relief
- Flexible and hidden cable outlet in four directions
- Low power consumption and long battery life
- Each channel of a receiver can be linked to up to seven transmitters

### System overview

#### Sets

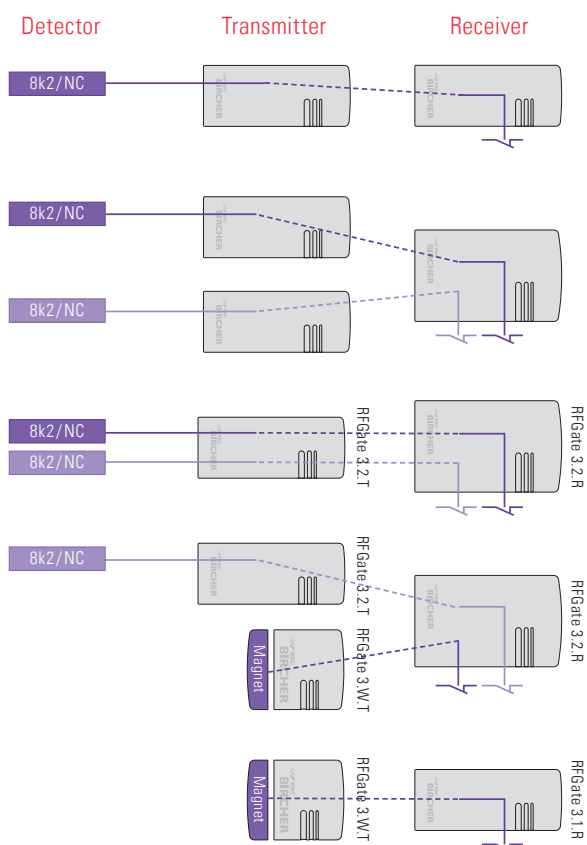
##### RFGate 3.1 (one-channel)

- 1 transmitter
- 1 receiver

##### RFGate 3.2 (two-channel)

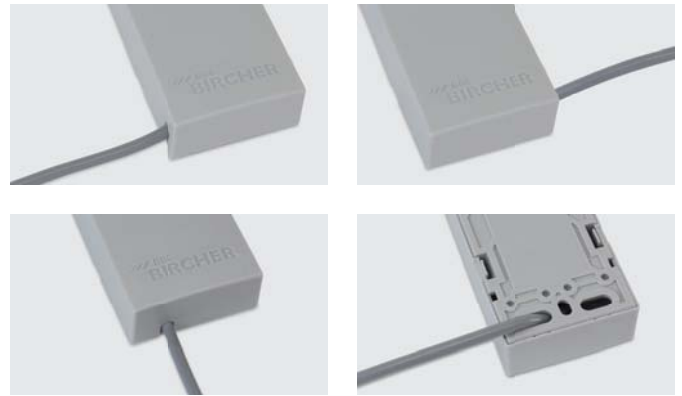
- 2 transmitters
- 1 receiver

#### Custom combinations





## Cabling



## Applications

### Situation

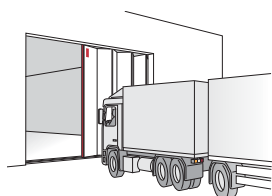
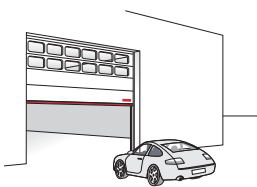
Sectional or folding door

### Solution

RFGate 3.1

### Benefits

- Reliable protection of main closing edge with category 3
- Wear-free signal transmission even with high or wide gates
- Flat transmitter RFGate 3.2.T can be easily integrated into the door panel



### Situation

Sectional door with wicket door and safety edge

### Solution

RFGate 3.2.R with RFGate 3.2.T and RFGate 3.W.T

### Benefits

- Receiver with two channels for parallel signal evaluation of safety edge and wicket door switch
- Reliable protection of main closing edge and wicket door monitoring with category 3
- Flat transmitter RFGate 3.2.T can be easily integrated into the door panel



### Situation

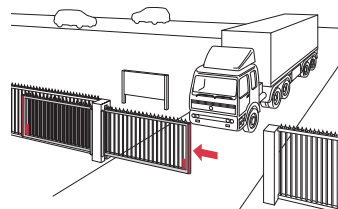
Sliding gate at site entrance, telescopic gate

### Solution

RFGate 3.2

### Benefits

- Wear-free signal transmission for all safety edges, even with large gates
- Distinction between OPEN and CLOSED direction
- Reliable protection of main and secondary closing edge with PLd and category 3
- Up to seven transmitters can be evaluated in parallel per channel
- Range up to 100 m



## Technical data

### Device dimensions (W × L × D)

RFGate 3.2.T (transmitter)	50 × 121 × 23 mm
RFGate 3.1.R (receiver)	50 × 121 × 23 mm
RFGate 3.2.R (receiver)	75 × 121 × 24 mm
RFGate 3.W.T (transmitter)	66 × 58 × 16 mm
RFGate 3.W.T (magnet)	66 × 17 × 16 mm

### Electrical data

Transmitter	RFGate 3.2.T/RFGate 3.W.T
Operating voltage	2 lithium batteries 3 V (CR2032)
Battery life	Type 2 years
Receiver	RFGate 3.1.R/RFGate 3.2.R
Operating voltage	12–36 V ACDC
Power consumption	0.5 W at 12 V / 1.2 W at 24 V
Outputs (redundant)	Relay 24 V ACDC, 1 A with 8.2 kOhm parallel resistor as option

### General data

Range	100 m under optimal conditions
Protection class	IP65
Approvals	EN ISO 13849-1 (PLd, cat. 3) EN 300 220, EN 301 489

The RFGate 3 signal transmission systems have been type-tested in combination with Bircher safety edges.

### Note

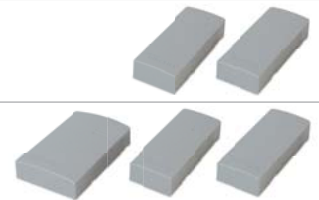
Technical details and recommendations concerning our products are based on experience and are an aid for the orientation of the user. Details stated in our brochures and data sheets do not guarantee special properties of the products. This does not apply to special product properties confirmed by us in writing or individually. Subject to technical alterations.

## Ordering information

### Article no. Description

#### Sets RFGate 3

<b>367667</b>	<b>RFGate 3.1</b> 1 RFGate 3.2.T transmitter 1 RFGate 3.1.R receiver
<b>367668</b>	<b>RFGate 3.2</b> 2 RFGate 3.2.T transmitters 1 RFGate 3.2.R receiver



#### Components

<b>367664</b>	<b>RFGate 3.2.T</b> Transmitter
<b>367665</b>	<b>RFGate 3.1.R</b> One-channel receiver
<b>367666</b>	<b>RFGate 3.2.R</b> Two-channel receiver
<b>368033</b>	<b>RFGate 3.W.T</b> Transmitter with integrated wicket door switch



**Danish Seller:**  
**Swissdoor ApS**  
Stenhuggervej 2  
DK-5471 Soendersoe  
Denmark  
Tel. +45 86 28 00 00  
mail@swissdoor.dk  
www.swissdoor.dk

### BBC Bircher Smart Access

Wiesengasse 20  
8222 Beringen  
Switzerland  
Tel. +41 52 687 11 11  
info@bircher.com  
www.bircher.com